

1000100101010010100010010100101111110010100001010001001111010100100100111010
1101001010010000111010100010101010010101010111010101000100011
110100111001000111101010100010101011111
001001000010001010001000100010
10100100010001000100011101
110001001000100000111
1110010111101
101001
11101
110
11
0
1
1

MySuite Copier v.4.2

myAQAsuite.com

This premium class Expert Advisor system brings using managed accounts, PAM, MAM, on your side. Rapid trading signals copying working completely under your control. Universal usecases dramatically decrease MAM, PAMM, time costs. Using this EA system you able reach good risks diversification using our flexible usecases.

myAQAsuite

Detailed user manual

Version of document 2.1

www.myaqasuite.com

1/12/2011

The mySuite Copier EA system (for MetaTrader4™)

Contents

License agreement	2
Main features and purposes	3
Use-cases and possible examples of configurations.....	4
One – to – one account	4
One – to – multiple accounts	4
Multiple – to – one account	5
Combining all use cases.....	5
Necessary settings of MetaTrader4	7
GUI (Graphic User Interface) of control panel and using RTGUI (Real-Time Graphic User Interface) technology	8
Control Panel of mySuite receiver	9
External parameters of mySuite.Sender	11
External parameters of mySuite.Receiver	12
Real-life example	15

License agreement

Current agreement of using software system Expert Advisor for MetaTrader4™ **mySuite Copier v.4.x** which contains two module **mySuite.sender** and **mySuite.receiver** (in future **Copier**, or **EA**) is agreement between you (end-consumer) and **Letambe International Inc.** Letambe International is official reseller of myAQAsuite developer's team. Made decision to purchase EA **Copier** you are under an obligation follow of conditions of current agreement.

Rights owners of property on **Copier** and its developers are authors of this and other systems with prefix "MySuite_". Like official consumer you have right only use this system (**Copier**). Registration of **Copier** is not necessary and has not restriction for duration of using.

You can purchase **Copier** only by authors or their official reseller, or affiliators. All other cases and patterns of purchasing of this system are illegal and will be judged illegal by definition of all applicable law. Any sale or resale of intellectual property or created derivatives so obtained will be prosecuted to the fullest extent of all local, federal and international law.

For the **Copier** system will be provided non-guaranteed technical support. That means you can ask authors questions around using **Copier** and help will arrive (if nothing can disturb this).

Copier has no restriction for cases or patterns of using. That means you can install this system on any quantity of PCs and use it without restrictions when you bought unrestricted version of license.

You CANNOT decompile, disassemble and investigate code of **Copier**. Also you cannot transmit this system for third persons. All rights are not declared here obviously belong to authors.

The **EA** deliver by "AS IS" principle. Warranty or obligations are not provided. You use **EA** at one's own risk/responsibility. You agree that will not any claims (in any cases of aftereffects).

Copier system will be compiled individually for each licensed user. The system will build exceptionally for your account-numbers (up to 5). You can say number (4 up to 8 digits) of your accounts at once or more times in future. Deliver of **Copier** for more than 5 accounts will is also possibly, please look order form on site (no restriction version). You can order unrestricted quantity of **Copier** system for demo accounts.

Authors will not be personally liable for any possible detriment which you may have using **Copier**, even in case authors was noticed on possibility of this detriment.

Authors have not duty to notice you for new updates or on changing of this agreement. You have watch on our internet-site without assistance and invitation.

When you purchasing **Copier** by authors or by their official reseller, means you apply all condition of this agreement and agree all of it. If you are not agreeing with conditions of our agreement you are shouldn't to purchase **Copier** by authors. Any and all monetary funds you transferred will not be returned in any cases.

Nobody else authors of **Copier** has rights to change text of this agreement.

Main features and purposes

In simple words the **mySuite Copier** system is a copier of any trading signals from one account on the MetaTrader4™ terminal to other[s]. The system able move control of **MAM (Multi Account Management)** from broker's side to your own side. You can mix your own trading signals from multiple traders into your own trading strategy, with your own risk management and risk diversification. Doing this you can build your trading signals broadcasting system also.

Thanks possibility of distributed running the system can working in multiple modes:

- The system manages accounts balance proportional copying of signals.
- Copying trading signals in "One – to - One accounts" mode
- Copying trading signals "One – to - Multi accounts" mode
- Copying trading signals in "Multi accounts – to - one account" mode
- Copying trading signals in "Multi accounts - to one account - to multi accounts" mode

The system contains two different parts: **Sender** and **Receiver**. The Sender part running on source account[s] and send trading signals on target account[s] by Receiver part. The receiver and sender are different EA and using different settings to working together. The Receiver part has own **GUI (Graphic User Interface)** to help take real-time control on target account[s]. Thanks **RTGUI (Real-Time Graphic User Interface)** technology customer able doing real-time control on current situation:

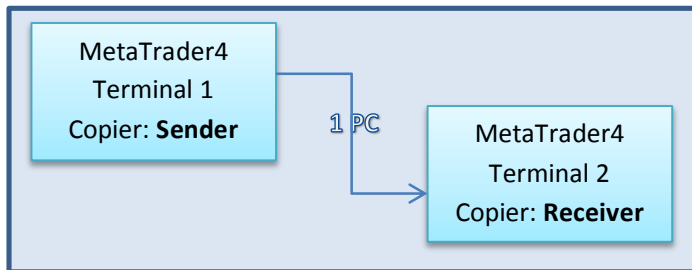
- Checking targets accounts draw-down and blocking trading
- Closing all position by trader or whole accounts (in case multiple-to-one account mode)
- Closing all profitable or all loses position by trader or by whole accounts
- Enable/disable whole trading or only current trader trading

User able make one own trading strategy or MAM using different setting on receiver side like: lot-multiplier factor, real-time managing position by different sources (sender exemplar).

These are not complete list of use-cases for using the **mySuite Copier** system.

Use-cases and possible examples of configurations

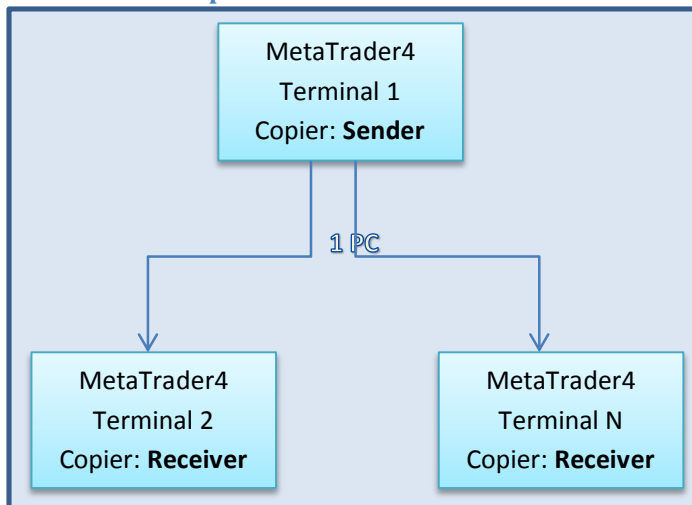
One - to - one account



Pic. 1

This is a basic use-case to using simple copying of trading signals to other trading accounts. For example you have one invest login data to supervising on one account where goes trading managed by real good trader. Trader working on 10.000 Euro account, your target account is 100.000 Euro of deposit size. You able copying traders signal with lot multiplier factor = 10. This is proportion factor for these two accounts deposit sizes.

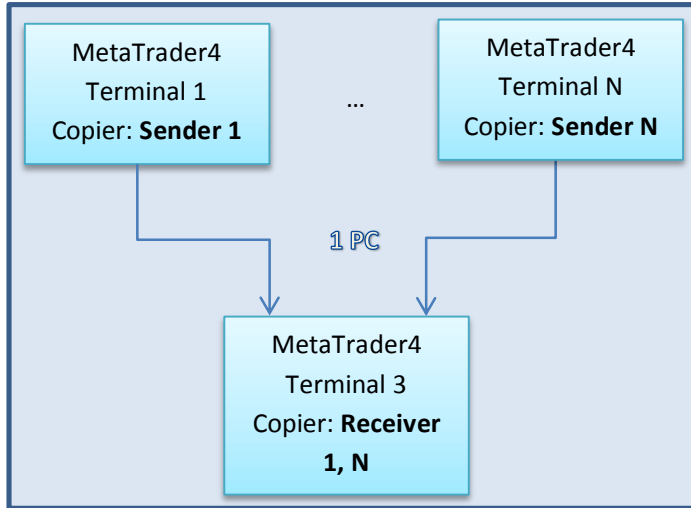
One - to - multiple accounts



Pic. 2

This is typical use-case for MAM (**M**ulti **A**ccount **M**anagement). For example you have copy for more than one account. Each accounts deposit size is not same like each one. That means you have to copying with different multiplier factors for each target accounts. Each exemplar of Receiver can have own proportional Senders account deposit to this receivers account deposit to keep proper money management.

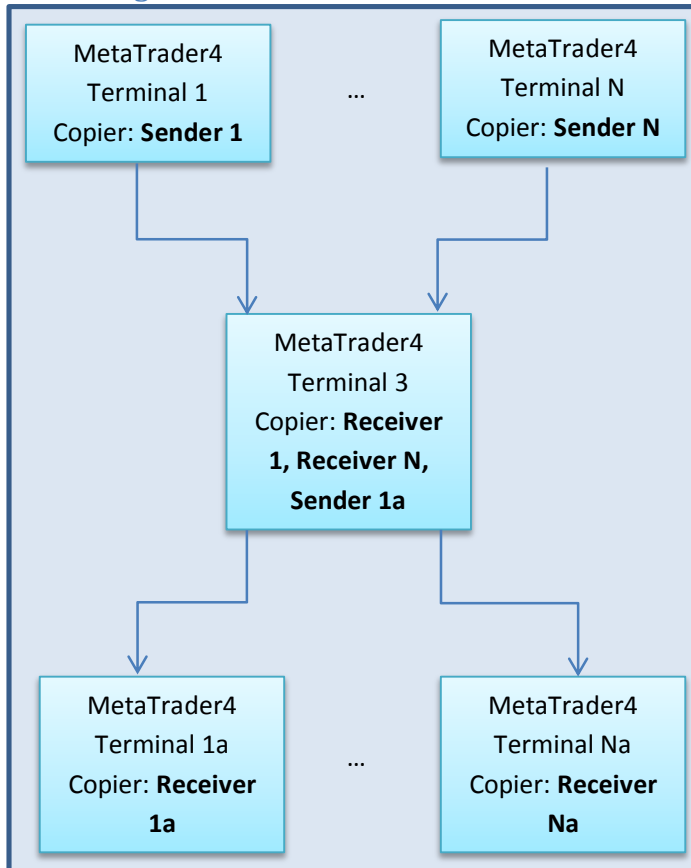
Multiple - to - one account



Pic. 3

Using this use-case you able mix your own trading strategy combining multiple trading strategies. You can collect several trading strategy to one with differ risk control for each source senders accounts. Combining several trading strategies you can enable/disable each trader real-timely.

Combining all use cases



Pic. 4

This use-case is combination of all previous use-cases. Here you can mix your own strategy, using personal risk settings for each trader. Combine their trading signals into one common strategy which one will be copied to multiple your investor accounts, using personal lot multiplier.

Real life example:

You manage one **MAM**. In your activities are 3 traders with different trading strategies, risks and timeframes. 1st one using more risk Forex strategy and 0.5 lot for positions on his 10.000 Euro account. He holds his positions very short time. 2nd uses more conservative Forex strategy, 1 lot for market enter on 50.000 Euro account, but very precise signal give him possibility keep little drop-down in longtime perspective. 3rd and last trader trades with Gold and Silver, some indexes on CDF market and operates with 30.000 Euro account size.

Our task is to combine for us all 3 strategies to one, and make it with less dropdown in long-time perspective. We mix all 3 traders into one 100.000 Euro demo account to combine each one with our risks properties. We made table of proportion to mix each one and keep our understanding of risks management:

- 1st trader's mixing properties calculated using following formula:
Target Account Size / Source account size / volume of traders
We have:
 $100.000 / 10.000 / 3 = 3.3$
As we said this trader keep more risk strategy but our task is combine all 3 traders into one strategy with less risk we made decision decrease his lot multiplier factor down to 2.5
- 2nd trader shown low drop-down in long-time period and has more confidence. We using our formula for him exactly as described above:
 $100.000 / 100.000 / 3 = 0.33$
- 3rd trader uses for trading some special trading tools like indexes. Our investors may have not these tools on his trading accounts to trade with these market tools. We made decision decrease his lot multiplier factor too.
 $100.000 / 30.000 / 3 = 1.11$
We also decrease his lot multiplier down to 0.8

See table:

Table 1

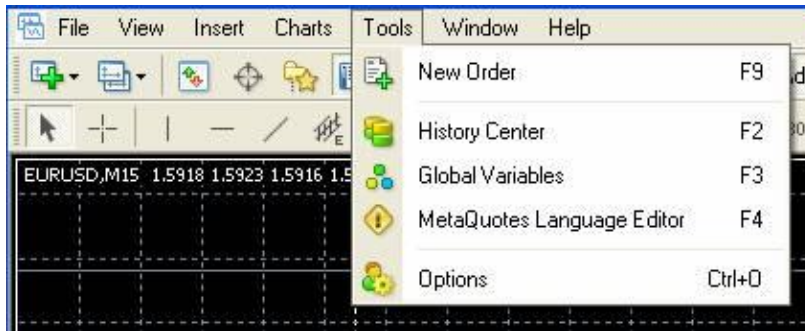
Trader	Traders account size	Lot multiplier factor
1 st	10.000	2.5
2 nd	100.000	0.33
3 rd	30.000	0.8

Now we have to set up 3 receivers of **mySuite Copier** to mix 3 traders and one **Copier sender** to broadcasting our trading strategy to multiple accounts we are managing. To do this we setting up receivers for each investors accounts using **AutoLot** (See below) feature within **Copier receiver** part.

Necessary settings of MetaTrader4

For working with our advisor (however for any other) some MT4 settings should be applied.
Changing these settings is necessary before our advisor run.

For do this select within MT4 “Tools” -> “Options”, or press Ctrl-O



Pic. 5

Within displayed window:

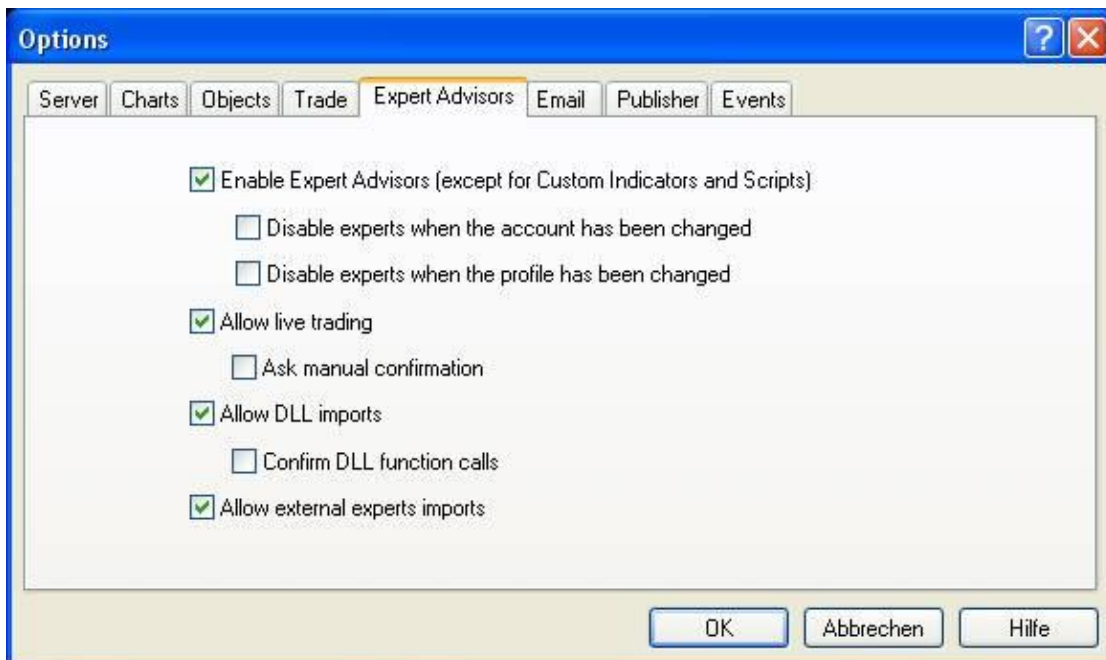
Go to “Expert Advisors” tab and set checkboxes:

“Enable Expert Advisors”

“Allow live trading”

“Allow DLL imports”

“Allow external experts imports”



Pic. 6

Confirm your changing by “OK” buttons.

GUI (Graphic User Interface) of control panel and using RTGUI (Real-Time Graphic User Interface) technology

RTGUI (Real Time Graphic User Interface technology specially developed by myAQAsuite developers team for using in EA running under MetaTrader4™ trading platform)

- First of all, after the any **MySuite** EA (which uses RTGUI) is started, please select your “Cursor” (yellow finger Pic. 7). For do this just double click on this finger. If the finger is selected, it will be framed like on screenshot below.



- After this your “Cursor” will be selected always till you change a Timeframe of current chart



- Now you have to decide which button, checkbox or radio button you need press to change something in EA working. If you want to press a button, just drag your “Cursor” and drop it on the button.



Pic. 7

- When you dropped the “Cursor” object, it will moved back immediately and action of this button will be executed.
- The Control panel contains 4 types of **GUI** objects.

1. Buttons:



. Working as normally buttons in any application. After dropping your “Cursor” buttons actions will be executed immediately.

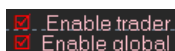
2. Radio buttons:

these type of buttons are grouped in massive of values. Pressing one of these, get it selected and automatically unselect selected before radio button.



This type of GUI object is absent in current control panel (Please see others mySuite products)

3. Checkboxes:



this type of **GUI** objects can store two values: On/Off.

Control Panel of mySuite receiver



Pic. 8

Now let review all GUI buttons and checkboxes of **mySuite Copier.Reciever** control panel.

1. "Close all profitable this trader" button closes all profitable positions made by trader whose trading signals are copying on this account. This trader means that current exemplar of **mySuite.receiver** can copying signals only from **mySuite.sender**. To copy signals from other[s] **mySuite.sender** (traders) you have run other exemplar of **mySuite.Receiver**.
2. "Close all loses this trader" button is same as previous but only for loses positions
3. "Close all profitable" button closes all profitable position in whole account, not only opened by current trader. This button will close all positions, even made by other exemplars of **mySuite.Receivers** are running on this account.
4. "Close all loses" button is same as previous but only for loses positions.
5. "Close all this trader" button will close all position (profitable and loses) and pending orders, opened by this exemplar of **mySuite.receiver**.
6. "Close all" button closes all position and pending orders on this account.
7. "delete all pending" button cancels all pending orders are installed on current account. But be noticed that if your copying is still active at moment you use this button, all pending orders will installed again. These proceeds because **mySuite.sender** constantly sends his commands to receiver and this part of system (sender) know nothing about actions of user on the receiver side. In this case you have disable whole copying on this account first. To do this please uncheck "Enable global" checkbox (see item 12).
8. "Delete all pending current trader" button doing the same as previous, but only with current exemplar of receiver positions.
9. "Close all opened" button closes all opened position on current accounts. Please be noticed: if opened position has been closed earlier than 350 seconds (value of **OpenDuringTime** parameter of **mySuite.Sender**) this position will be opened again because sender constantly sends his commands.



PLEASE KEEP IN MIND THAT ALMOST ALL OPERATIONS OF CLOSING POSITIONS AND PENDING ORDERS CANCELLING, BEST AND SECURE EXECUTE AFTER DISABLING OF RECEIVING SENDERS SIGNALS BY CLICKING "ENABLE TRADER" OR "ENABLE GLOBAL" CHECKBOXES.

10. "Close all opened current trader" buttons does the same as previous, but only for current receiver's exemplar positions.

11. "Enable trader" checkbox enable/disable copying signals from sender for current Sender-receiver link. If on this account, one or more receiver exemplar[s] are working and copying their trading orders of those senders, this checkbox will not extend his trading prohibition on those working.
12. "Enable global" checkbox enable/disable whole trading on this account of current Metatrader4 terminal. No one other exemplar of **mySuite.receiver** able to install any position or pending order on this account. Copying on current metaTrader4 terminal completely prohibited!
13. "Trader: [name]; lot factor = [factor]; MaxDD=[Drop-down]" this info string is important parameters to see main behavior of **mySuite.receiver**. Because user can mix more different traders/EA from one or more senders, it is very important to see current short info to manage main account.
 - [name] shows traders name. It's just link between sender and receiver to determine on the receiver side is the sender's command gone from current trader. This link described on the receiver side by **TradersComment** parameter (see external parameters).
 - [factor] shows lot multiple factor. Source sender's position will be multiplied on this value to fit new proportion on target account. In case this **mySuite.receiver** external parameter **LotSizeFactor** = 0, Calculation of lot size for each position will executed automatically using actual account balance on source and target accounts.
 - [MaxDD] shows maximal dropdown by account equity in %% when copying by receiver will be stopped. In this case the checkbox "Enable trader" will be unchecked and signals copying by this sender-receiver link will be prohibited.
14. This is *Cursor* object what you have to move on desired buttons and checkboxes to execute their actions (see RTGUI using description).

External parameters of mySuite.Sender

- **Language = 0;** Language: 0-English, 1-Русский.
- **idSender = 1;** Identifier of sender. Must be differing in case you use Multi senders to one account.
- **NumberAccount = 0;** Account number to send trading signals. If this value more than 0 and equal current account, trading signals will send to receiver.
- **stFileName = "Deals1";** this is deals repository filename for real-time trading signals storing to be read by **mySuite.receiver** (without **.csv** file extension, it will be added automatically)
- **NumberOfFiles = 1;** number of repository files which are copies of **stFileName** + "1", + "2", + "3" etc. This feature must exclude cases when reading by receiver will canceled by access denied reason, when other exemplar of receiver opened this file for reading.
- **CommentPrefix = ".:M:S.:";** this is part of trading position comment to be determined as native position by receiver. This parameter must be equal **ReceiverCommentPrefix** parameter in **mySuite.receiver** external parameter.
- **TraderSuffix = "";** trader's name. For example = "Andrew". Must be equal **TradersComment** in **mySuite.receiver** external parameter.
- **PrintEnable = True;** True – enable, False – disable of logging messages into journal of Metatrader4 terminal.
- **AllMessages = False;** when **True** writes all messages into journal of Metatrader4 even if these messages are same.
- **IntUpdate = 1.434;** time interval to recursive call main procedure of **mySuite.sender**, if 0 procedure will execute by each tick.
- **OpenDuringTime = 350;** Time in seconds during receiver is permit to open positions, if 0 – no time restrictions
- **MaxPriceShift = 7;** Maximal price difference on receiver account relative to price of opened position by sender (0 – no restriction)

External parameters of mySuite.Receiver

- **Language = 0;** Language: 0-English, 1-Русский.
- **NumberAccount = 0;** Account number to receive trading signals. If this value more than 0 and equal current account, trading signals will executed on receiver.
- **NameFileSound = "expert.wav";** sound filename to play by each trading operation.
- **stFileName = "C:\Program Files\MetaTrader 4 Sender\experts\files\Deals1.csv";** path to sender's repository file (full name with path)
- **IntReading = 1.7715;** time interval to recursive call main procedure of **mySuite.receiver**, if 0 procedure will execute by each tick.
- **UseGUIfactor = true;** If **true** each GUI object of control panel will be multiplied on GUIfactor value. See nex parameter
- **GUIfactor = 0.8;** GUI multiplier factor to keep proper aspect and GUI objects size on Windows7 OS and on monitors with full HD resolutions.

In Windows7™ see *Control Panel\All Control Panel Items\Display* (**GUIfactor** for 100% = 1, 125% = 0.8, 150% = 0.66)

Symbols conversion parameters

- **UseTranSymbols = False;** Use symbol translation. If **true** will be execute symbols translation using table of conformity of different accounts trading tools. For example sender side symbol named *EURUSD*, but on receiver side the same symbol has a name *fxEURUSD*. So this file mast contain a string: "*EURUSD;EURUSDfx*" (without quotation marks).
- **stSymbols = "ibfx_mini_n.txt";** filename with table symbol's conformity. The file must be located using path: "*c:\Program files\MetaTrader receiver1\Expert\files*".

Trades Parameters

- **MinimumMargin = 1000;** Minimal size of free margin to continue trading by received signals
- **MinSizeLots = 0.01;** Minimal lot size. The system at start trying to know this value by broker, but sometimes broker's settings doesn't permit to get this regulation's parameter. In this case you give this value by this parameter obligatory.
- **LotStep = 0.01;** Minimal lot step. Also as in previous point.
- **MaxSizeLots = 100;** Maximal lot size applied on receiver side to prevent opening account's danger positions.
- **Lots = 0;** fixed lot size (if 0 – automated lot calculation will be executed)
- **LotSizeFactor = 1;** lot size multiplier. Each position lot size will be multiplied on this factor.



Be aware with this value because wrong or huge value can bring big loses.

If this value = 0, lot size will calculate proportional sender's and receiver's account balances automatically.

Options for auto lot calculation.

- **Source2Target = 1;** If sender and receiver accounts base currency is no same, to keeping proper aspect in auto lot calculation, user should determine how auto lot will be calculated. To do this **mySuite.receiver** need next possible values:
0 - USD to EUR, 1 - EUR to EUR, 2 - EUR to USD.
For example: if sender's account base currency is **USD**. But receiver's account base currency is **EUR** you have set **0** to this parameter.
- **EURUSD_Symbol = "EURUSD";** this value store exact symbol string for EURUSD symbol on receiver account. For example: if on receiver side account the **EURUSD** has differ symbol syntax (for example **EURUSD_FX**) user must set this parameter to **EURUSD_FX**.
- **LotDeviation = 30;** Maximal allowed value for lot size difference in %
- **InstallSL = true;** If **true** all trading signals will be copied with Stoploss parameter, else without it.
- **Slippage = 3;** Slippage in prices to open new.
- **NumberOfTry = 5;** this value set number of tries to open incoming trading signal. After all this attempts is complete, but position still not opened, this position will not be continued to be opened. Next trading signal[s] are in repository file stored will be tried to be executed.
- **PauseAfterError = 20;** this value determine a pause in tries after unsuccessful attempt of opening trading position

Parameters of dropdown watching

- **StartDeposit = 10000;** start account's balance value to calculate current drawdown.
- **AlertDropDown = 20;** Value of whole account drawdown in %% when **mySuite.receiver** system will repeatedly notify you about current drawdown by email and writing messages into Matatrader4 log.
- **maxDropDown = 30;** Maximal drawdown allowed on whole account. When this drawdown value is reached, signal receiving will globally prohibited and all positions will be closed.



Please be aware with this value, because wrong using of this can bring undesirable losses!

- **UseAlertSound = "alert.wav";** Sound to play in case of alert drawdown.

Checking alien orders

This feature is necessary if you managing a MAM and won't your investors managed accounts would be traded by other persons or EAs. In this feature the **mySuite.receiver** system checking is your orders deleted by outsider.

- **CheckAliensKill = false;** if **true** system will check whole account's positions for existing alien positions and pending orders.
- **AlertByEmail = false;** if **true** and if alien position exist on account, user will noticed about this by email message.



Please remember: don not use this checking in case you mixing more mySuite.sender's signals into one account!

Relationship with mySuite.Sender settings

- **ReceiverCommentPrefix** = ".:M:S."; this is necessary sender's orders comment part (see **CommentPrefix** parameter of **mySuite.sender**) to be determined as native **sender - receiver** position.



Please note: to be determined as native trading signals, user need set parameters

ReceiverCommentPrefix of **mySuite.Receiver** and **CommentPrefix** of **mySuite.sender** as same value!

- **TradersComment** = ""; this value allow determine current sender's positions in set of whole position on current account. For example on sender's side working trader Bob. Use this trader's name to determine his positions around whole account on receiver side.
- **PrintEnable** = **True**; True – enable, False – disable of logging messages into journal of Metatrader4 terminal.
- **AllMessages** = **False**; when **True** writes all messages into journal of Metatrader4 even if these messages are same.
- **MarketWatch** = **False**; some brokers rules prohibit installing new orders with **Take profit** and **Stop loss** parameters at once. In this case, if this value is **True**, the receiver will install new position at first without **Take profit** and **Stop loss** parameters, and after installing it, modify it with received for this position **Take profit** and **Stop loss**.
- **UseSound** = **False**; using sound (if **true**) for each trading operation executed by **mySuite.receiver**.

Real-life example

Company Abra-Kadabra International carries on MAM (Multi Accounting Management) business. The Abra-Kadabra has several success traders who shown stable performance in long time period and using different approach in Forex trading. They are trading in different time frame periods and using different tools and tricks to reach their targets. See Table 1 and description of traders above.

MAM manager (let name his Bob) have invest password to accounts on each traders. He has a task mix his own trading strategy with own risk management to broadcast this trading signals around companies investor clients.

Bob need install or copy 3 Metatrader4 terminal set into 3 different folders:

```
C:\meta\Source\Terminal_trader1\
C:\meta\Source\Terminal_trader2\
C:\meta\Source\Terminal_trader3\
```

He have to install **mySuite.sender** on each terminal EA folders also:

```
C:\meta\Source\Terminal_trader1\experts\mySuite_Sender_3.4.ex4
C:\meta\Source\Terminal_trader2\experts\mySuite_Sender_3.4.ex4
C:\meta\Source\Terminal_trader3\experts\mySuite_Sender_3.4.ex4
```

Now he need start **mySuite.sender** on each trader's Metatrader4 terminal. Please see Table 2 to check out differences in parameters Bob have to do (red text color).

Table 2

Settings of mySuite.sender for Trader1	Settings of mySuite.sender for Trader2	Settings of mySuite.sender for Trader3
Language = 0; idSender = 1; NumberAccount = 0; stFileName = "Trader1"; NumberOfFiles = 3; CommentPrefix = ".:M:S:."; TraderSuffix = "Trader_1"; PrintEnable = True; AllMessages = False; IntUpdate = 1.439; OpenDuringTime = 350; MaxPriceShift = 7;	Language = 0; idSender = 2; NumberAccount = 0; stFileName = "Trader2"; NumberOfFiles = 3; CommentPrefix = ".:M:S:."; TraderSuffix = "Trader_2"; PrintEnable = True; AllMessages = False; IntUpdate = 1.511; OpenDuringTime = 350; MaxPriceShift = 7;	Language = 0; idSender = 3; NumberAccount = 0; stFileName = "Trader3"; NumberOfFiles = 3; CommentPrefix = ".:M:S:."; TraderSuffix = "Trader_3"; PrintEnable = True; AllMessages = False; IntUpdate = 1.334; OpenDuringTime = 350; MaxPriceShift = 7;

Also see mySuite.sender External parameters of **mySuite.Sender** description on page 11.

Running mySuite.sender with these parameters is a half of whole system. Now Bob have setup mixing account to harvesting whole number of trading signals of each trader.

For this he need install one more Metatrader4 terminal into stand-alone folder:

`C:\meta\Mix\Terminal_mixer\`

This terminal must be logged on demo account with 100.000 Eur and never expiring working time. Bob have to install **mySuite.sender** and **mySuite.receiver** on mix terminal EA folders also:

`C:\meta\Mix\Terminal_mixer\experts\mySuite_Sender_3.4.ex4`

`C:\meta\Mix\Terminal_mixer\experts\MySuite_Receiver_v.4.1.ex4`

Bob have to run 3 exemplars of **mySuite.receiver** to harvest whole trading signals and one of **mySuite.sender** to broadcast his own signals.

Table 3

Mixer Metatrader4 terminal		
Settings of mySuite.receiver for Trader1	Settings of mySuite.receiver for Trader2	Settings of mySuite.receiver for Trader3
stFileName= <code>"C:\meta\Source\Terminal_trader1\experts\files\Trader1.csv";</code> IntReading = 1.7715; UseTranSymbols = False; stSymbols = ""; MinimumMargin = 1000; MinSizeLots = 0.01 LotStep = 0.01 MaxSizeLots = 100 Lots = 0; LotSizeFactor = 2.5; Source2Target = 1; EURUSD_Symbol = "EURUSD"; InstallSL = true; Slippage = 8; NumberOfTry = 5; PauseAfterError = 3; StartDeposit = 100000; AlertDropDown = 20; maxDropDown = 30; CheckAliensKill = false; AlertByEmail = true; ReceiverCommentPrefix = <code>".:M:S:.";</code> TradersComment = "Trader_1"; PrintEnable = True; AllMessages = False; MarketWatch = False;	stFileName= <code>"C:\meta\Source\Terminal_trader2\experts\files\Trader2.csv";</code> IntReading = 1.4565; UseTranSymbols = False; stSymbols = ""; MinimumMargin = 1000; MinSizeLots = 0.01 LotStep = 0.01 MaxSizeLots = 100 Lots = 0; LotSizeFactor = 0.33; Source2Target = 1; EURUSD_Symbol = "EURUSD"; InstallSL = true; Slippage = 8; NumberOfTry = 5; PauseAfterError = 20; StartDeposit = 100000; AlertDropDown = 20; maxDropDown = 30; CheckAliensKill = false; AlertByEmail = true; ReceiverCommentPrefix = <code>".:M:S:.";</code> TradersComment = "Trader_2"; PrintEnable = True; AllMessages = False; MarketWatch = False;	stFileName= <code>"C:\meta\Source\Terminal_trader3\experts\files\Trader3.csv";</code> IntReading = 1.3423; UseTranSymbols = True; stSymbols = "ForexAdvance.txt"; MinimumMargin = 1000; MinSizeLots = 0.01 LotStep = 0.01 MaxSizeLots = 100 Lots = 0; LotSizeFactor = 0.8; Source2Target = 0; EURUSD_Symbol = "EURUSD"; InstallSL = true; Slippage = 8; NumberOfTry = 5; PauseAfterError = 20; StartDeposit = 100000; AlertDropDown = 20; maxDropDown = 30; CheckAliensKill = false; AlertByEmail = true; ReceiverCommentPrefix = <code>".:M:S:.";</code> TradersComment = "Trader_3"; PrintEnable = True; AllMessages = False; MarketWatch = False;

Let review some parameters are differ one of other:

- **stFileName = "C:\meta\Source\Terminal_trader2\experts\files\Trader2.csv";** It should be clear that repository files are locate on different path.

- **IntReading** = **1.4565**; differ because Bob need bring asynchrony in repository file reading.
- **UseTranSymbols** = **True**; this feature must be used for mixing trading signals for 3rd trader because his broker has his own syntax for some symbols we have on our mixing account.
- **stSymbols** = "**ForexAdvance.txt**"; for proper mixing trading signals of 3rd trader Bob need to use this file of symbols conformity. This file contains some strings...

```
EURUSDfx;EURUSD
GOLDFx;GOLD
SILBERfx;SILBER
DOWJ;DOW
DAXD;TETDAX
```

...are using to real-time conversion to be used on our mixer account by receiver.

- **LotSizeFactor** = **0.33**; different lot multiplier for Bob's understanding of risk management for each trader
- **Source2Target** = **0**; 3rd trader's account have base account currency USD. But Bob's mixer account base currency is EUR.
- **PauseAfterError** = **3**; 1st trader has scalper strategy and in case his trading signal did not executed immediately, awaiting about 20 sec is to huge time period for traders strategy.
- **TradersComment** = "**Trader_2**"; Personal trader's comment suffix to determine his alone from set of others.

Now after completing setting up or mixer account, Bob need to setup one exemplar of mySuite.sener on this mixer account to broadcasting his own signals. See senders setup above. All settings is same but only one main parameter is under:

stFileName = "**mixer**"; filename of file-repository of mixing account.

After these setups Bob's signals broadcasting system sends his own signals in one repository file:

C:\meta\Mix\Terminal_mixer\experts\files\mixer.csv

To setup each new investor's account to receive Bob's signals, necessary use in **mySuite.Receiver** exemplars of each investor's account parameters:

stFileName="C:\meta\Mix\Terminal_mixer\experts\files\mixer.csv"

LotSizeFactor = **0**; for automatic lot size factor calculation on investor's account side.