

2010

# GiG v.2.x.

## User manual

The tool to enable your greatness. Extremely extend your trading possibilities and decrease response time on market situations.

Expert Advisor GiG v.2.x.  
1/15/2010



# The GiG v.2.1. (For MetaTrader4™)

- Main features and purpose
- License agreement
- Necessary settings of MetaTrader4™
- Main concept and description of covering loses
- Control panel
- How to use GUI objects using RTGUI technology
- Working with control panel
  - Controlling a TP line for common Take Profit parameter
  - Description and purpose of “Lock All” buttons
- External settings of GiG v.2.x.
- Real life example

## Main features and purpose

- The EA<sup>1</sup> GiG v.2.x. is trading tool for professional traders who keep control every market situation in real-time.
- The GiG lets trade with covering of loses with GUI<sup>2</sup> controlling.
- Suitable for all trading strategies. Working in **semi-automatic** or in **full automatic** modes.
- Thanks RTGUI<sup>3</sup> technology applied of changing main trading settings and parameters in real-time mode, visually, without restarting the EA, using WYSIWYG<sup>4</sup> principle.
- Includes two modules with visual managing.
  - Very helpful for simultaneous trading with different power of signal of your trading strategy,
  - or (maybe) for trading with two different risks and lots,
  - or for trading in different settings of coverage rules,
  - or for trading by hedging mode (upstairs and downstairs),
  - or more and more other trading strategies of approaches.

---

<sup>1</sup> Expert Advisor

<sup>2</sup> Graphic User Interface

<sup>3</sup> Real-Time Graphic User Interface

<sup>4</sup> What You See Is What You Get

## License agreement

Current agreement of using software system Expert Advisor for MetaTrader4™ **GiG v.2.x.** (in future **GiG**, or **EA**) is agreement between you (end-consumer) and **Letambe International Inc.** Letambe International is official reseller of myAQAsuite developers team. Made decision to purchase EA **GiG** you are under an obligation follow of conditions of current agreement.

Rights owners of property on **GiG** and its developers are authors of this and other systems with prefix "MySuite\_". Like official consumer you have right only use this system (**GiG**). Registration of **GiG** is not necessary and has not restriction for duration of using.

You can purchase **GiG** only by authors or their reseller or affiliators of official reseller. All other cases and patterns of purchasing of this system are illegal and will be judged illegal by definition of all applicable law. Any sale or resale of intellectual property or created derivatives so obtained will be prosecuted to the fullest extent of all local, federal and international law.

For the **GiG** system will be provided non-guaranteed technical support. That means you can ask authors questions around using **GiG** and help will arrive (if nothing can disturb this).

**GiG** has no restriction for cases or patterns of using. That means you can install this system on any quantity of PCs and use it without restrictions when you bought unrestricted version of license.

You CANNOT decompile, disassemble and investigate code of **GiG**. Also you cannot transmit this system for third persons. All rights are not declared here obviously belong to authors.

The **GiG** deliver by "AS IS" principle. Warranty or obligations are not provided. You use **GiG** at one's own risk/responsibility. You agree that will not any claims (in any cases of aftereffects).

**GiG** system will be compiled individually for each licensed user. The system will build exceptionally for your account-numbers (up to 5). You can say number (4 up to 8 digits) of your accounts at once or more times in future. Deliver of **GiG** for more than 5 accounts will is also possibly, please look order form on site (no restriction version). You can order unrestricted quantity of **GiG** system for demo accounts.

Authors will not be personally liable for any possible detriment which you may have using **GiG**, even in case authors was noticed on possibility of this detriment.

Authors have not duty to notice you for new updates or on changing of this agreement. You have watch on our internet-site without assistance and invitation.

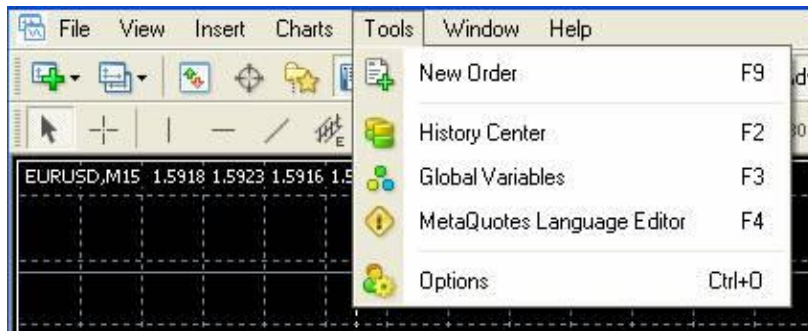
When you purchasing **GiG** by authors or by their official reseller, means you apply all condition of this agreement and agree all of it. If you are not agreeing with conditions of our agreement you are shouldn't to purchase **GiG** by authors. Any and all monetary funds you transferred will not be returned in any cases.

Nobody else authors of **GiG** has rights to change text of this agreement.

## Necessary settings of MetaTrader4

For working with our advisor (however for any other) some MT4 settings should be applied.  
**Changing these settings is necessary before our advisor run.**

For do this select within MT4 “Tools” -> “Options”, or press Ctrl-O



**Pic. 1**

Within displayed window:

Go to “Expert Advisors” tab and set checkboxes:

“Enable Expert Advisors”

“Allow live trading”

“Allow DLL imports”

“Allow external experts imports”



**Pic. 2**

Confirm your changing by “OK” buttons.

## Main concept and description of covering loses

Covering of loses position working by principle: when last position opens, it has more lot size than previous. 1-st, 2-nd and whole covering series positions must have same direction (all are long, or all are short). When market goes against first position, each next one wait a market rollback to be profitable and cover loses of previous, at the expense of increased lot size of last position.



**Be aware that this is not endless process. Each next position with increased lot eating up you free margin and at end you can get margin call by broker's regalement.**

Trader must calculate his strategy possible accuracy to market's entering and such trading's parameters like:

- **Start lot** (initial first lot to opening covering series)
- **Lot increasing factor** (Lot increasing factor to cover losses of each previous)
- **Knee step** (distance between each next covering position)
- **Volume of maximal opened knee positions** (to avoid opening unlimited covering positions)

Little example: Such currency pairs like **CHFUSD**, **USDCAD**, **CHFJPY** have less volatility than **EURUSD**, **GBPUSD** (In timeframe 2008-2010 daily market movement reached up to 3500 pips). Theoretically these less volatile pairs able keep profitable trading in both directions (upstairs and downstairs) for long time with following parameters:

- **Start lot = 0.01**
- **Lot increasing factor = 1.68**
- **Knee step = 30 pips**
- **Volume of maximal positions = 12**

These settings were used in full automated mode for a long time in uninterrupted mode. This trading was successfully made by the **GiG** system on real accounts with following results and brokers trading parameters:

**Min lot = 0.04**

**Lot step = 0.01**

**Leverage = 1:200**

Trading was on 4 pairs for risk diversification. By start deposit 10.000 Euro in 6 month was reached common profit 135% by maximal drawdown 40%.



Please note that this example is just example from real life and shows one pattern of trading using the **GiG** EA

## Control panel

There is your control panel:



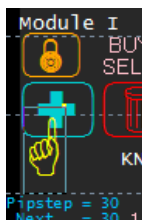
Pic. 3

You can see here main **GUI** objects, like usual **Radiobuttons**, **Checkboxes**, **Buttons** and simple text. Please read simple tips how to operating with these **GUI** objects.

## How to use GUI objects using RTGUI™ technology

**RTGUI** (Real Time Graphic User Interface technology specially developed by **myAQAsuite** developers team for using in **EA** running under **MetaTrader4™** trading platform)

- First of all, after the **GiG** EA is started, please select your "Cursor" (yellow finger Pic. 4). For do this just double click on this finger. If the finger is selected, it will be framed like on screenshot above.
  - After this your "Cursor" will be selected always till you change a Timeframe of current chart
- 
- Now you have to decide which button, checkbox or radio button you need press to change something in EA working. If you want to press a button, just drag your "Cursor" and drop it on the button.



Pic. 4

- When you dropped the “Cursor” object, it will moved back immediately and action of this button will be executed.
- The Control panel contains 4 types of **GUI** objects.

1. Buttons:



Working as normally buttons in any application. After dropping your “Cursor” buttons actions will be executed immediately.

2. Radio buttons:

these type of buttons are grouped in massive of values. Pressing one of these, get it selected and automatically unselect selected before radio button.



3. Checkboxes:

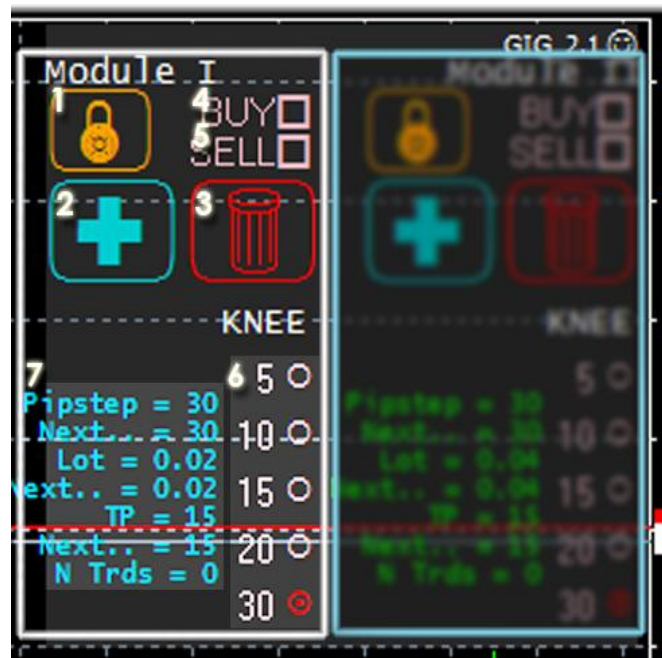


this type of **GUI** objects can store two values: On/Off.

4. Operating **TP line**, line object showing price level (Pic. 6, 11, 13)

## Working with control panel

This is detailed Control Panel’s description of **GiG v.2.x**



Pic. 5

As you can see the control panels have 2 same set of **GUI** objects for 2 modules (**Module I** and **Module II**). Because both modules **GUI** objects has same actions below will described set of **GUI** objects for **Module II**.



**Operating using GUI objects, changes settings of your trading in real-time and immediately. Please be carefully and keep clear understanding what you are doing. Please keep training on demo accounts to have strong and complete understanding all aspect of possibilities and response of the EA GiG.**

Let see purpose and working of each button.

1. "Lock all" button. Lock whole set of opened positions for module. See below detailed description.
2. "Close all profitable" button. Closes all profitable positions in serein of opened positions.
3. "Close all positions" button. Closes all positions opened by work of current module.
4. "BUY" checkbox. Switch ON/OFF upstairs trading (long positions). If you select BUY – you will trade only on buying. If market will go against you (downstairs) the EA will open new BUY positions with increased lot to cover your loses.
5. "SELL" checkbox. Switch ON/OFF downstairs trading (short positions). If you select SELL – you will trade only on selling. If market will go against you (upstairs) the EA will open new SELL positions with increased lot to cover your loses.
6. Knee step preset group of preselected values (editable in external parameters). You can set your preset set of knee steps values. By default this set is: **5, 10, 15, 20, 30**. Using and changing these values, you change your trading parameters real-time.
7. This block of text info is your main real-time changeable main parameters. You can switch showing this info ON and OFF in external settings of EA.

### ***Controlling a TP line for common Take Profit parameters of all positions in series***

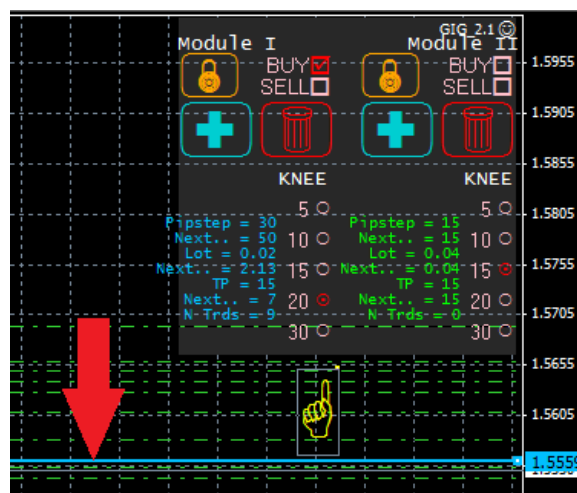


Traders able change Take Profit parameter[s] for whole positions in series of covered trades. In accordance with conception **WYSIWYG**.

For changing all Take Profit parameters you have double click on a line to select it. The TP line drew over native MetaTrader4 take profit's dotted line (Pic. 6).

After the TP line is selected, just move it on desired price. All orders will be changed with new **Take Profit** price.

Pic. 6





## *Description and purpose of using “Lock All” buttons*




Sometimes traders (as all people) doing mistakes. Result of mistakes for professional traders is critical drop down. One approach to freeze up or try to save situation is locking all positions. In the **GiG** system realized an automation of this process.

If your **UseAutolock** variable is **true** and your current equity value is less than applied by your Locking external settings (see description of external settings), the **GiG** system will execute locking automatically.

Also if you want lock all opened positions manually you can press “Lock All” button 

In this and 1-st case, each of lose position will be covered by mirrored position, opened on current market price and with same lot size like exist locked positions is (see Table 1). After locking process is completed, the “Lock All” button changes his view to this  icon:

Each locking position has no Take profit and Stop loss parameters to avoid automatic closing.

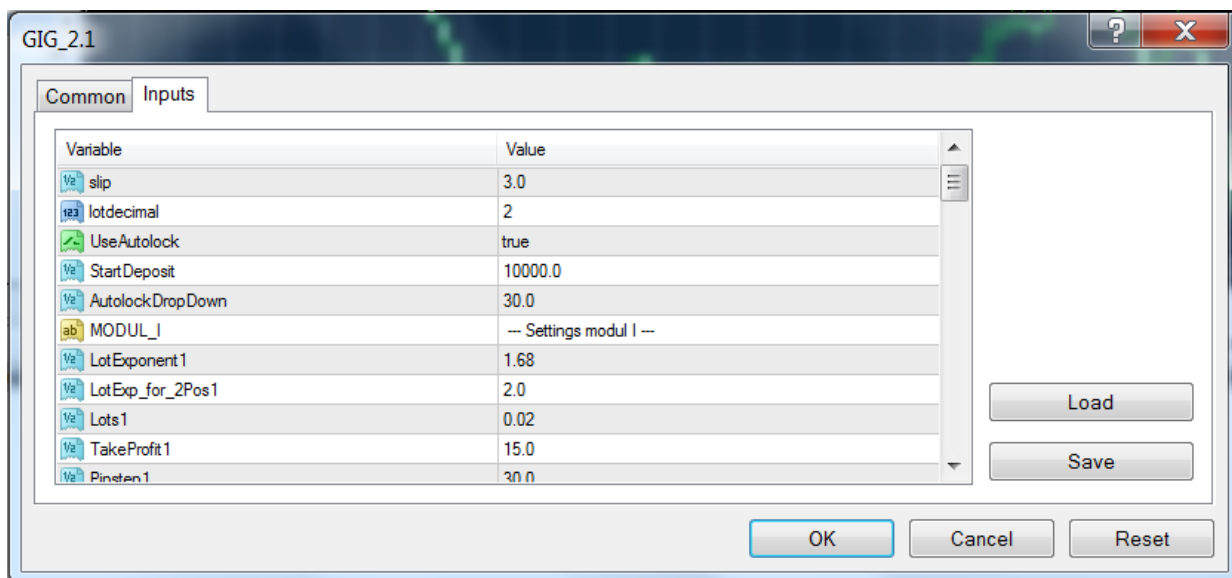
When comes time to unlock locked series, you can press the “Unlock all” button . After this all locking positions will be closed on current market price.



**Be noticed around brokers trading reglament about locking, hadging.**

## External settings of the EA GiG v.2.x

What you start the EA, external settings window will appear.



**Pic. 7**

There are about 70 parameters of EA. But don't be afraid, more of these is recursive, other are for your common trading settings, thirds are just for **GUI**, display style and colors. ☺

- **slip = 8.0**  
Slippage size. How much a price can differ on requote (will changed a price in last moment).
- **lotdecimal = 2**  
exactness or real value for Lot value. How much signs come after comma: 0 – normal lots (1), 1 – mini lots (0.1), 2 – micro lots (0.01)
- **UseAutolock = false**  
you can decide do you want lock all your losses positions after your losses will reach some drop down value (**AutolockDropDown**) in percent.
  - **StartDeposit = 10000.00**  
Starting deposit size. Starting value you calculate your profit loses.
  - **AutolockDropDown=30**  
Percentage value for approved drop down. If your drop down will more than **AutolockDropDown** value and **UseAutolock** parameter is **true**. All series of your opened lose positions will be locked by opening same series with same lots against you locking.

Example:

Opened loses positions	Locking positions
Buy <b>0.01</b> at price <b>1.3100</b>	Locking Sell <b>0.01</b> at price <b>1.3130</b>
Buy <b>0.02</b> at price <b>1.3070</b>	Locking Sell <b>0.02</b> at price <b>1.3130</b>
Buy <b>0.03</b> at price <b>1.3040</b>	Locking Sell <b>0.03</b> at price <b>1.3130</b>
Buy <b>0.05</b> at price <b>1.3010</b>	Locking Sell <b>0.05</b> at price <b>1.3130</b>

Table 1



Please be noticed that your broker approved locking positions.

Next goes settings for both modules. Settings are same and only one module will be described.

- LotExponent1 = 1.68**  
 this is multiplication factor for lot increasing of each next opening positions. If the market goes against you and it gone "knee step volume" of pips (30 on example in table above) your next position will be = YOUR CURRENT LOT \* **LotExponent**[N] where [N] is number of module.
- LotExp\_for\_2Pos1 = 1.68**  
 this is multiplication factor for lot increasing of 2-nd opening positions. For traders who believe to his accuracy of market enter and 2-nd cover position is last in series. To keep normal covering it is better to set it in same value like **LotExponent1**.
- Lots1 = 0.02**  
 lot size for first position in series. Please be carefully to install this value because after each [knee step] pips when the Market goes against you, next position will be opened with increased lot, multiplied on **LotExponent** factor
- TakeProfit1 = 15.0**  
 Take Profit value for each position
- PipStep1 = 30.0**  
 knee step value in pips. Determine how much pips the Market can go against your last position in series to open next one (with increased by multiplied on **LotExponent** factor lot). Opening after every **Pipstep** pips new position with increased lot is main approach of the GiG EA to coverage loses.
- ExponentStep1 = false**  
 switch ON/OFF. This mode (if ON=true) will increase knee step value (**Pipstep**) using entered **StartStepExp** parameter (see below)
- StartStepExp1 = 5**  
 after what number of knee, the Knee step (**Pipstep**) will be increased using **PipStepExponent** factor (see below)
- PipStepExponent1 = 1.3**  
 this is multiplier for knee step (**Pipstep**). After **StartStepExp** knee is opened in series, the **Pipstep** will be multiplied on **PipStepExponent** factor.



This mode (**ExponentStep**) are very helpfully to avoid situation when your series knee number is reach some value (**StartStepExp**) and next lot increasing is very dangerous for your free margin.

This mode helps for traders who trading using some trend based strategies or other strategies where exact market enter is very important. Usual this traders use huge initial **Lots** for opening position and using big numbers of knee is very dangerous for free margin.

- **QuantumTPStep1 = true**  
switch ON/OFF. This mode (if ON=true) will increase Take profit (**TakeProfit**) value for each next position using entered **TPdecStep** parameter (see below)
- **StartStepPip1 = 5**  
after what number of knee, the Take profit value (**Take Profit**) will be decreased on **TPdecStep** pips
- **TPdecStep1 = 2**  
on this value Take profit value (**Take Profit**) will be decreased after **StartStepPip** knee opened



This mode (**QuantumTPStep**) is also very helpfully for traders who trade with exact market enter and who using sufficiently large lot size. To economize free margin for next trading, it's very necessary to close loses series of trades quick. Decreasing Take Profit value starting from **StartStepPip** knee number also brings closer moment of closing whole loses series.

1. Next parameters are preset of Knee step values (**Pipstep**) which is part of Control Panels GUI

**GO\_StepVariant1\_1 = 5**

**GO\_StepVariant1\_2 = 10**

**GO\_StepVariant1\_3 = 15**

**GO\_StepVariant1\_4 = 20**

**GO\_StepVariant1\_5 = 30**



Trader can use his own presets for each module. Or, for example, traders who using some trending strategies can make two different set of Knee steps, for powerful signal and for signals with less weight. Traders who trading just using Martingale principle for trading on markets rollbacks on both side, can install same presets for both modules, and operate trading using 1-st module for trading upstairs and 2-nd module for downstairs.

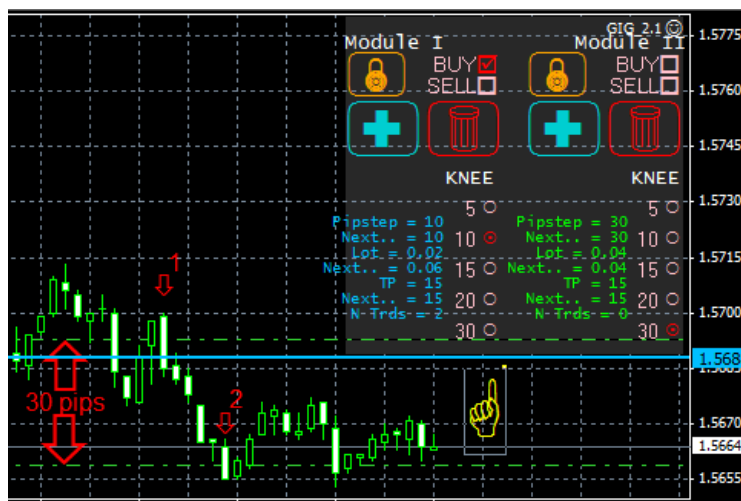
2. **DefaultSelect1 = 5**  
this is number of preselected knee step value after EA is started. For example: for knee step preset provided above, the **DefaultSelect1 = 5** will stored into **Pipstep** parameter a value = **30**.
3. **MagicNumber\_module1 = 1112111**  
unique number which linked with each position of EA for Module 1
4. **LockMagicNumber\_module1 = 1119111**  
unique number which linked with each locking position of EA for Module 1
5. **MaxTrades = 10**  
Number of maximal knee can be opened in series by one module. If knee quantity is more value = **MaxTrades** no new positions will be opened. This parameter is protector against opening huge numbers of positions with increased lot size and can save your free margin.

6. **UseEquityStop = FALSE**  
switch ON/OFF. This mode (if ON=true). This is another type of money management, as opposed to locking position (**UseAutolock**). This mode will close all opened position when a drop down by equity will reach entered **TotalEquityRisk** value in percent.
7. **TotalEquityRisk = 20.0**  
this value using for counting drop down. When your drop down by equity will reach **TotalEquityRisk** percent, all opened position will be closed.
8. **UseTrailingStop = FALSE**  
switch ON/OFF. This mode (if ON=true). If you using some trend based or others strategies based on exact market enter, the GiG EA providing own trailing stop to reach more profit on market movement. Set this parameter into True and your position will trail a stop loss with market movement.
9. **TrailStart = 10.0**  
this parameter of trailing stop feature operates start trailing stop when profit of position is more than **TrailStart** parameter.
10. **TrailStop = 10.0**  
this parameter of trailing stop feature operate a distance from current market price (Bid/Ask) in **TrailStop** pips till actual market.

## Real life example

**Trader uses strategy with accurate market enters. In this example described situation when trader opened long position using by wrong signal.**

1. At **point 1** trader decided market will go upstairs and opened long position (BUY). At this moment he used **KNEE step = 30 pips**.  BUY
2. Market gone against trader and reached **30 pips** of minus. Now is a moment when the EA opening cover position with increased lot.
3. At **point 2** the EA opened this 2-nd position. Lot is increased to cover minus of 1-st position.
4. Now trader decided that market will go upstairs and changed **KNEE step to 10 pips**  BUY (Pic. 8)



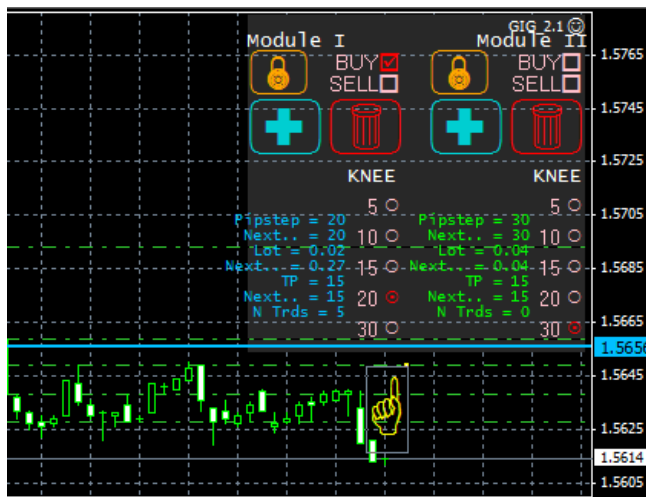
Pic. 8

5. After this market gone again downstairs against opened positions. The EA, using new KNEE step = 10, opened other long positions (**points 3,4,5**) in this series to cover loses (Pic. 9).



Pic. 9

- Obviously In this situation trader was wrong in his previous forecast around market moving. He changed **KNEE step** to save margin and whole situation.



Pic. 10

Market kept moving against opened series of long positions. New 6-th position has been opened. In this case at distance 20 pips (as was changed in point 6: Pic. 10).

To save situation trader moved "TP line" (Take Profit) to change Take Profit parameters by whole series of trades opened by this module (Pic. 11).



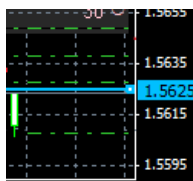
Pic. 11

Type	Size	Symbol	Price	S / L	T / P	Price	Commission	Swap	Profit	Comment
buy	0.02	gbpusd	1.5693	0.0000	1.5625	1.5612	0.00	0.00	-16.20	GIG1-0
buy	0.03	gbpusd	1.5659	0.0000	1.5625	1.5612	0.00	0.00	-14.10	GIG1-1
buy	0.06	gbpusd	1.5649	0.0000	1.5625	1.5612	0.00	0.00	-22.20	GIG1-2
buy	0.09	gbpusd	1.5638	0.0000	1.5625	1.5612	0.00	0.00	-23.40	GIG1-3
buy	0.16	gbpusd	1.5628	0.0000	1.5625	1.5612	0.00	0.00	-25.60	GIG1-4
buy	0.27	gbpusd	1.5608	0.0000	1.5625	1.5612	0.00	0.00	10.80	GIG1-5
Free margin: 5 108.87 Margin level: 2175.80%									-90.70	

Pic. 12

As you see all **Take Profit** parameters of trades series was changed to price **1.5625** (Pic. 12, 13).

After the market price reached **Take Profit** of whole series of trades, series has been closed with common profit **4.56**.



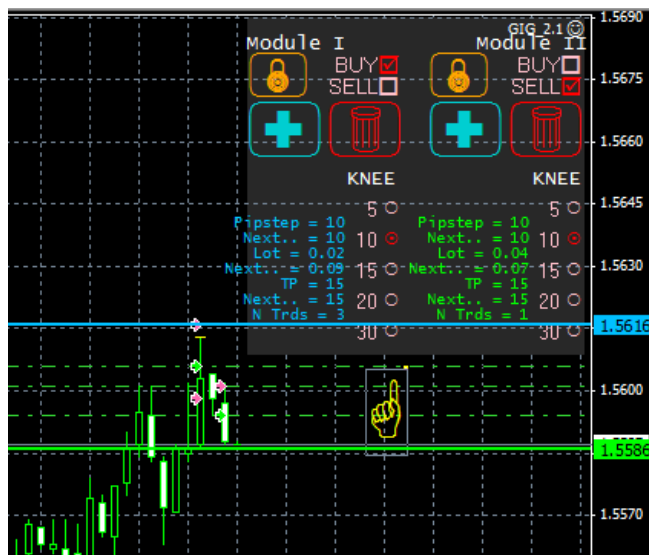
Pic. 13

*Resume: After wrong position opening, traders actions has save situation and his trades brought no loses thanks automatic coverage and operative actions made visually and in real-time.*

**Trader uses simple strategy of trading in both sides. When market goes upstairs, the Module I earns profit, but Module II opens new knees to cover loses. When trend changing and market goes downstairs, the Module II earns profit, but Module I opens new knees to cover loses.**

This type of trading can work absolutely automatically. For do this please read simple steps what trader done:

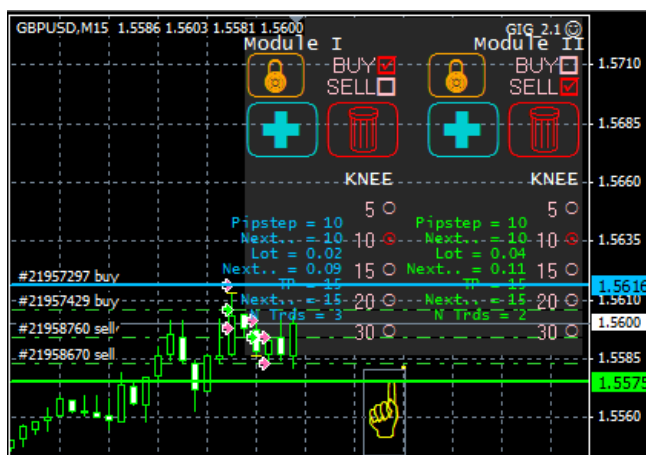
1. Trader checked the "BUY" checkbox of **Module I** and "SELL" checkbox of **Module II**.




**Pic. 14**


As you can see, the **Module I** and **Module II** have differ settings. Trader see common market trend downstairs and his settings for the **Module II** is more aggressive to earning more profit. The **Module I** have less aggressive settings for earning profit by short rollback's movement.

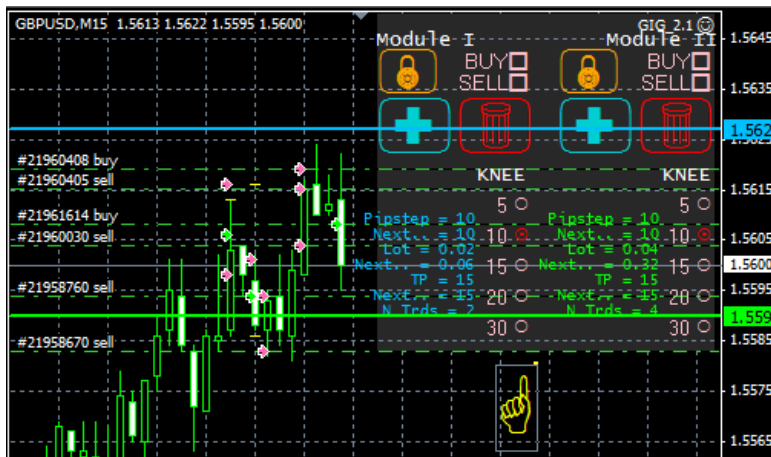
2. After series of profitable trades for one module marker stand in middle position (Pic. 15)



**Pic. 15**

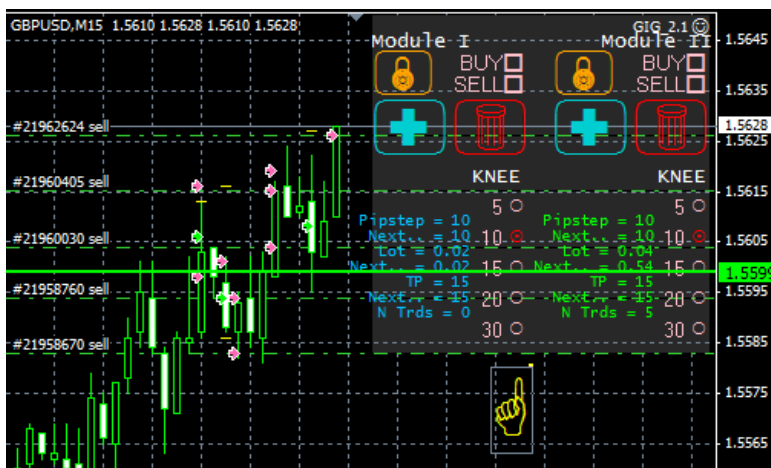
Both Modules opened by 2 knees in both sides. This methodic of trading based on shaking market movement. Trader can earn profit even by flat market situation like this. For do this he just changed KNEE step parameter for both modules = **10 pips** . 

- Flat market changed on short upstairs trend. As result the **Module II** opened several knee of trades, but **Module I** brought several profitable trades. Trader stoped opening of new trades in series by unchecking checkboxes "BUY" and "SELL" for both modules  (Pic. 16).



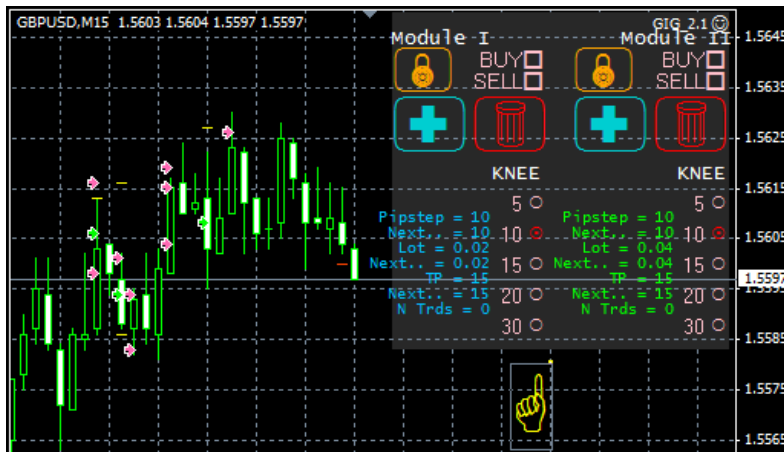
Pic. 16

- Market reached Take Profit's price of **Module I** position. New position was not opened (Unchecked checkbox "BUY"). The **Module II** opened next cover position (Pic. 17).



Pic. 17

- After market rollback down to Take Profit of trade's series of **Module II**, this series was closed with common profit (Pic. 18).



Pic. 18

*Resume: the system can trade in full automatic mode in both sides. After when trader switch both modules off, these modules automatically completed their series of trades and common trading has been stopped.*