

2010

GraphicTrader v. 2.x

User manual

The tool to enable your greatness. Extremely extend your trading possibilities and decrease response time on market situations.



GraphicTrader v. 2.x

- About system
- License agreement
- Introduction
- Necessary settings of MetaTrader4
- Running, settings and function description GraphicTrading
- Working with GraphicTrading
- Description GUI (Graphic User Interface) of GraphicTrading advisor
- Trailing-Stop description
- Useful features description

About System

Name of product: MySuite_GraphicTrading

Version of document: 1.4

License: Commercial

The MySuite_GraphicTrader was developing as additional Expert advisor for trading terminal MetaTrader4™ of MetaQuotes. The system designed for more comfortable visual trading management using WYSIWYG principle for MetaTrader terminals.

The MySuite_GraphicTrader was developing as additional Expert advisor for trading terminal MetaTrader4™ of MetaQuotes. The system designed for more comfortable visual trading management using WYSIWYG principle for MetaTrader terminals.

License agreement

Current agreement of using software system MySuite_GraphicTrading (in future GraphicTrading) is agreement between you (end-consumer) and Wettro Group Inc. Made decision to purchase GraphicTrading you are under an obligation follow of conditions of current agreement.

Rights owners of property on GraphicTrading and its developers are authors of this and other systems with prefix "MySuite_". Like official consumer you have right only use this system (GraphicTrading). Registration of GraphicTrading is not necessary and has not restriction for duration of using.

You can purchase GraphicTrading only by authors. All other cases and patterns of purchasing of this system are illegal and will be judged illegal by definition of all applicable law. Any sale or resale of intellectual property or created derivatives so obtained will be prosecuted to the fullest extent of all local, federal and international law.

For the GraphicTrading system will be provided non-guaranteed technical support. That means you can ask authors questions around using GraphicTrading and help will arrive (if nothing can disturb this).

GraphicTrading has no restriction for cases or patterns of using. That means you can install this system on any quantity of PCs and use it without restrictions.

You CANNOT decompile, disassemble and investigate code of GraphicTrading. Also you cannot transmit this system for third persons. All rights are not declared here obviously belong to authors.

GraphicTrading deliver by "AS IS" principle. Warranty or obligations are not provided. You use GraphicTrading at one's own risk/responsibility. You agree that will not any claims (in any cases of aftereffects).

GraphicTrading system will be compiled individually for each licensed user. The system will build exceptionally for your account-numbers (up to 5). You can say number (6 up to 8 digits) of your accounts at once or in future. We can compile for you accounts one build of GraphicTrading; one for all 1-5 accounts; or several for each accounts. Deliver GraphicTrading for more than 5 accounts will is also possibly, please look order form on site. You can order unrestricted quantity of GraphicTrading system for demo accounts.

Authors will not be personally liable for any possible detriment which you may have using GraphicTrading, even in case authors was noticed on possibility of this detriment.

Authors have not duty to notice you for new updates or on changing of this agreement. You have watch on our internet-site without assistance and invitation.

When you purchasing GraphicTrading by authors means you apply all condition of this agreement and agree all of it. If you are not agreeing with conditions of our agreement you are shouldn't to purchase GraphicTrading by authors. Any and all monetary funds you transferred will not be returned in any cases.

Nobody else authors of GraphicTrading has rights to change text of this agreement.

Introduction

Ladies and gentlemen!

We glad to see you in exclusive circle of users of our expert advisor for MetaTrader4 terminal MySuite GraphicTrading.

GraphicTrading was developing for simplification and visualization heavy and daily tasks of traders. Using WYSIWYG (**W**hat **Y**ou **S**ee **I**s **W**hat **Y**ou **G**et) principle you can extremely decrease time from decision-making to positions opening, making pending orders, modifying existing StopLoss and TakeProfit values. All what you need – is move cursor on desired button and your desire will be executed practically in a trice. The system is ideal solution for scalping and pips hunters also.

You can switch on/off trailing stop for opened positions, changing their parameters real-time just moving your cursor directly on your chart!

Using our advisor you can:

- Extremely faster open and close your positions!
- Manage SL and TP direct on your chart just moving lines by mouse!
- Switch on/off several type of Trailing-Stop for you opened positions!
- Using OCO (**O**ne **C**ancel **O**ther) option for opening positions.
- Possibility to order an inserting one more Trailing-stop type, using your principle.
- You can select volume of positions (Lot size).
- Directly on chart using lots list.
- Using percentage of you margin/balance/equity.
- Close positions on chart/charts.
- Close all opened positions and pending orders.
- Cancel all pending orders.
- Cancel all pending orders on current symbol.
- Close all opened positions.
- Close all opened positions on current symbol.
- Switch on/off warnings messages.

Choosing type and colors working lines for TP, SL, OP (**O**pen **P**osition, entrance point)

Use the “MyLine” feature. The MyLine is very comfortable and most used feature. This option gives you possibility drive your trading by you own rules but not brokers rules. Trade directly by lines installed and modified by you.

Working around functionality and comfort ability goes non-stop. Additional features will be implemented in future versions.

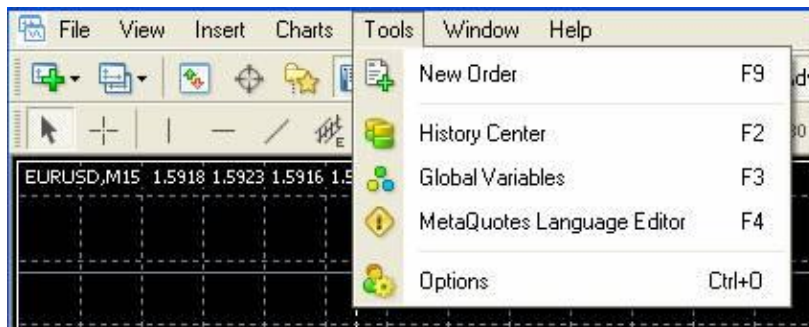
For traders who bought our advisor now, free support and updates are included.

We are open for taking dispute about improvements and new features for our advisors.

Necessary settings of MetaTrader4

For working with our advisor (however for any other) some MT4 settings should be applied.
Changing these settings is necessary before our advisor run.

For do this select within MT4 “Tools” -> “Options”, or press Ctrl-O



Within displayed window:

Go to “Expert Advisors” tab and set checkboxes:

“Enable Expert Advisors”

“Allow live trading”

“Allow DLL imports”

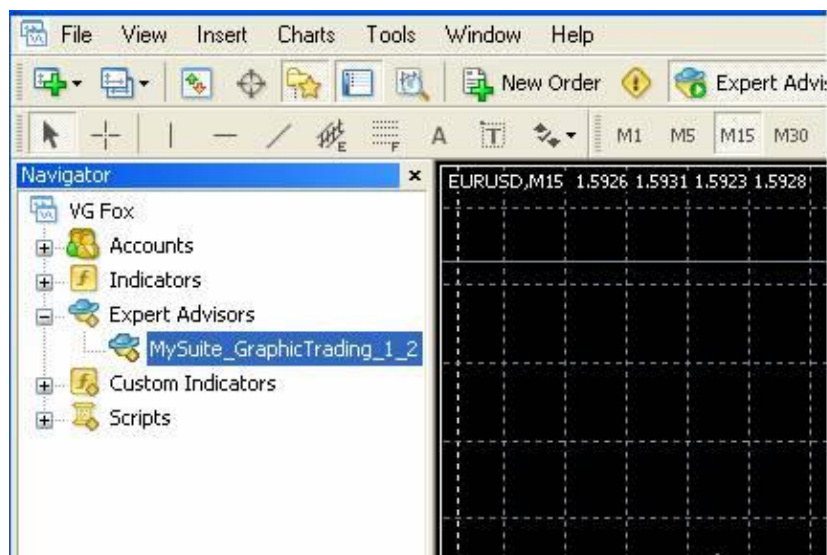
“Allow external experts imports”



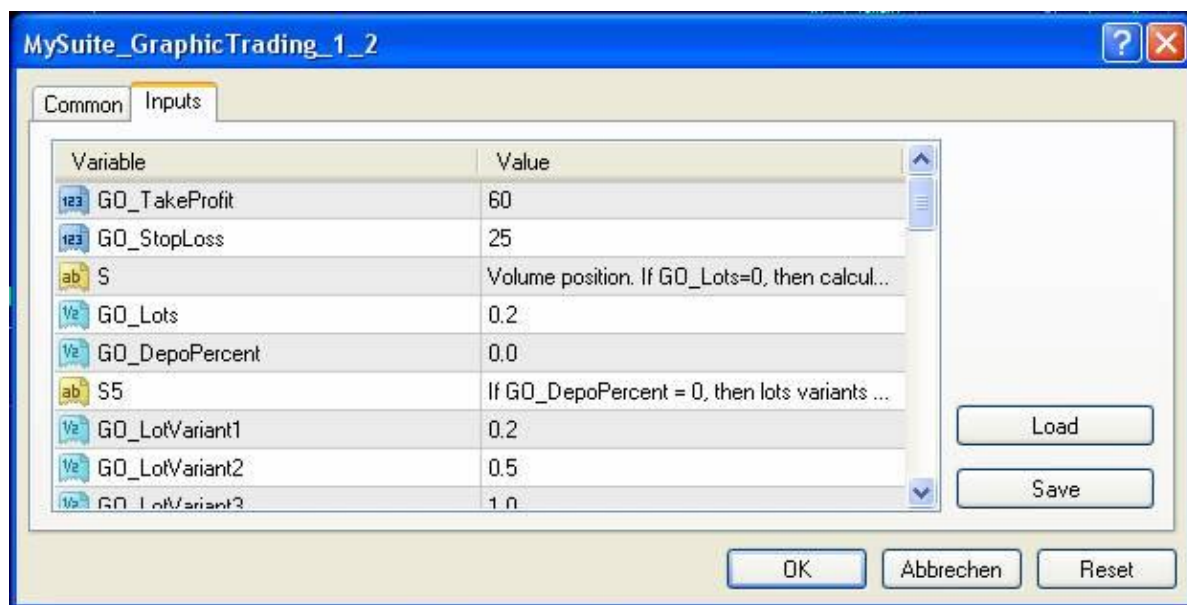
Confirm your changing by “OK” buttons.

Running, settings and function description MySuite_GraphicTrading

Select within Navigators treeview **MySuite_GraphicTrading** and double click on it or drop it into a chart



Before using our advisor you can change some external settings.



Defaults parameters for opening positions and pending orders:

GO_TakeProfit = 60

Distance from open price till TP (Take Profit) in pips.

GO_StopLoss = 25

Distance from open price till SL (Stop Loss) in pips.

GO_Lots = 0.2

Lot size. One lot is 100.000. If this value = 0, Lot size will calculate by GO_DepoPercent parameters and by one of 3 Boolean parameters GO_Balance; GO_Equity; GO_FreeMargin

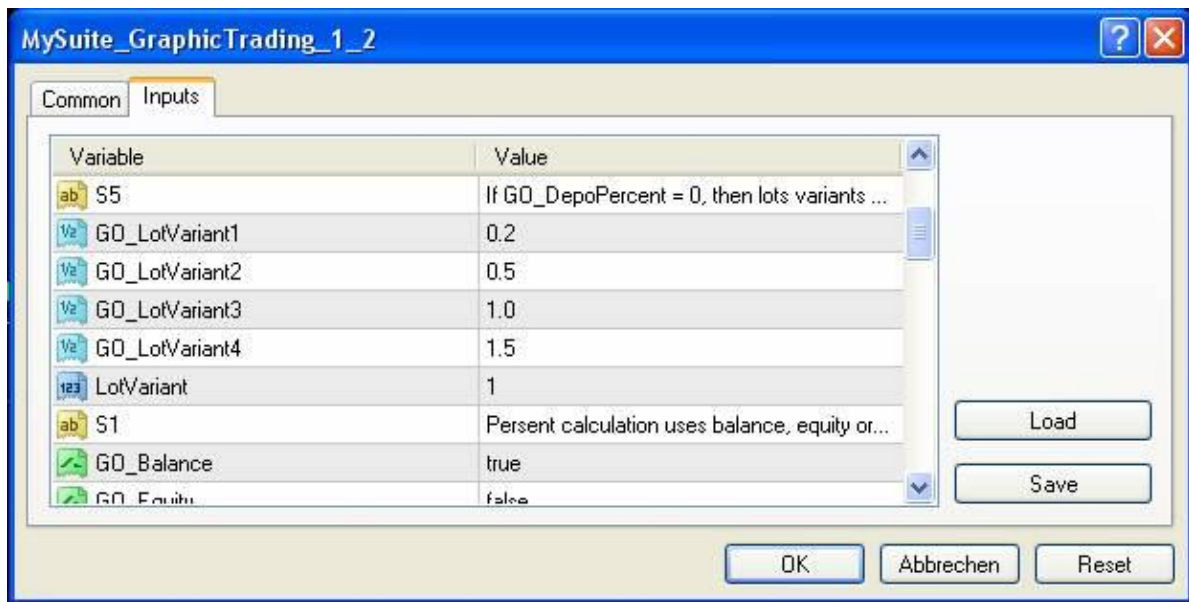
GO_DepoPercent = 0

If **GO_DepoPercent** more than 0 the lot size will be as percentage depends of:

If **GO_Balance = true**, the lot size will be as percentage of balance of active account

If **GO_Equity = true**, the lot size will be as percentage of equity of active account

If **GO_FreeMargin = true**, the lot size will be as percentage of value of free funds of active account (FreeMargin)



if **GO_DepoPercent = 0**, user able select directly on chart presets values of lots, which stored in **GO_LotVariant1..4** parameter.

If **GO_DepoPercent = 0**, trader can change real-time beforehand preset values of lot size.

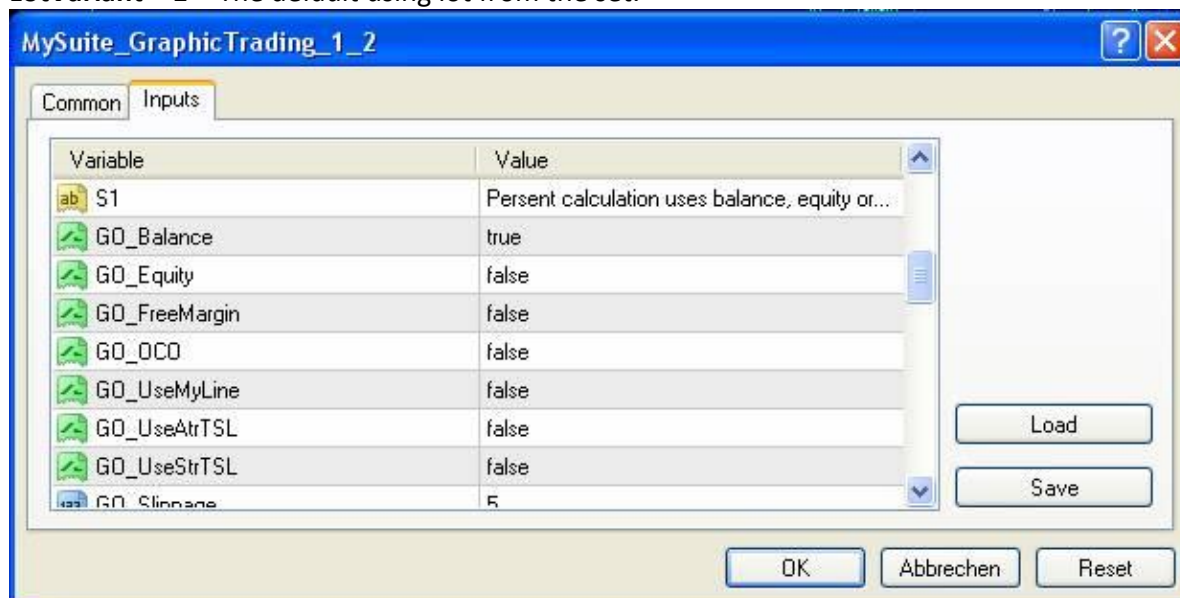
GO_LotVariant1 = 0.2

GO_LotVariant2 = 0.5

GO_LotVariant3 = 1

GO_LotVariant4 = 1.5

LotVariant = 1 - The default using lot from the set.



-

GO_OCO = false

If «true» - checkbox “OCO” will be preset as selected. See functions description.

GO_UseMyLine = false

If «true» - checkbox “MyLine” will be preset as selected. See functions description.

GO_UseAtrTSL = False

If «true» - checkbox “AtrTSL” will be preset as selected. See functions description.

GO_UseStrTSL = False

If «true» - checkbox “StrTSL”. will be preset as selected. See functions description.

GO_Slippage = 5

Maximal applied slippage for opening positions.

GO_Offset = 30

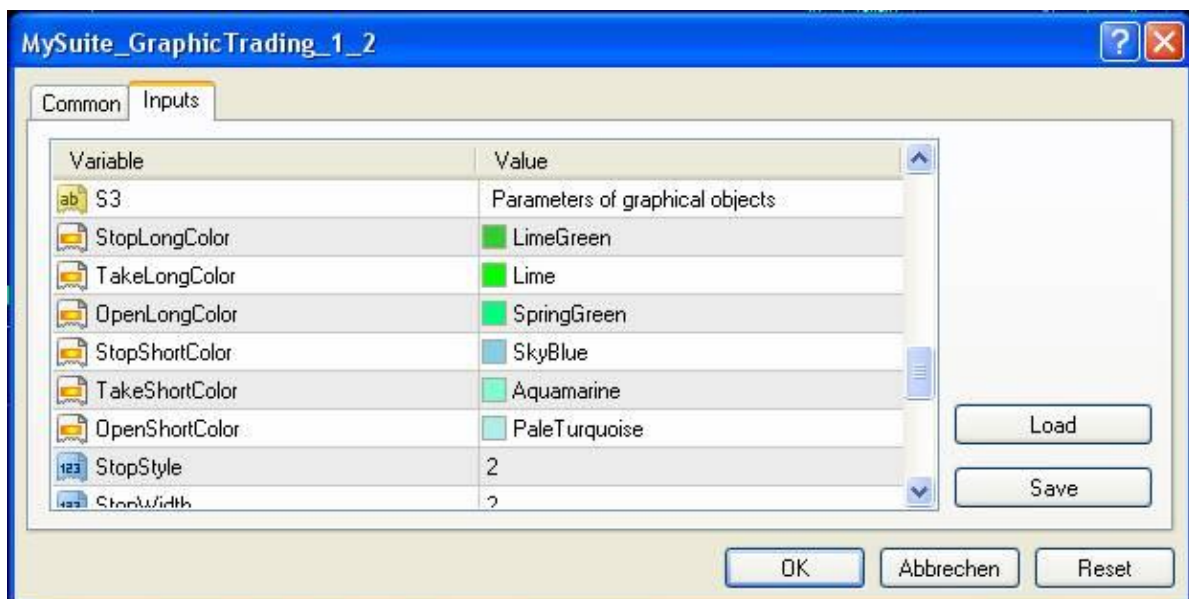
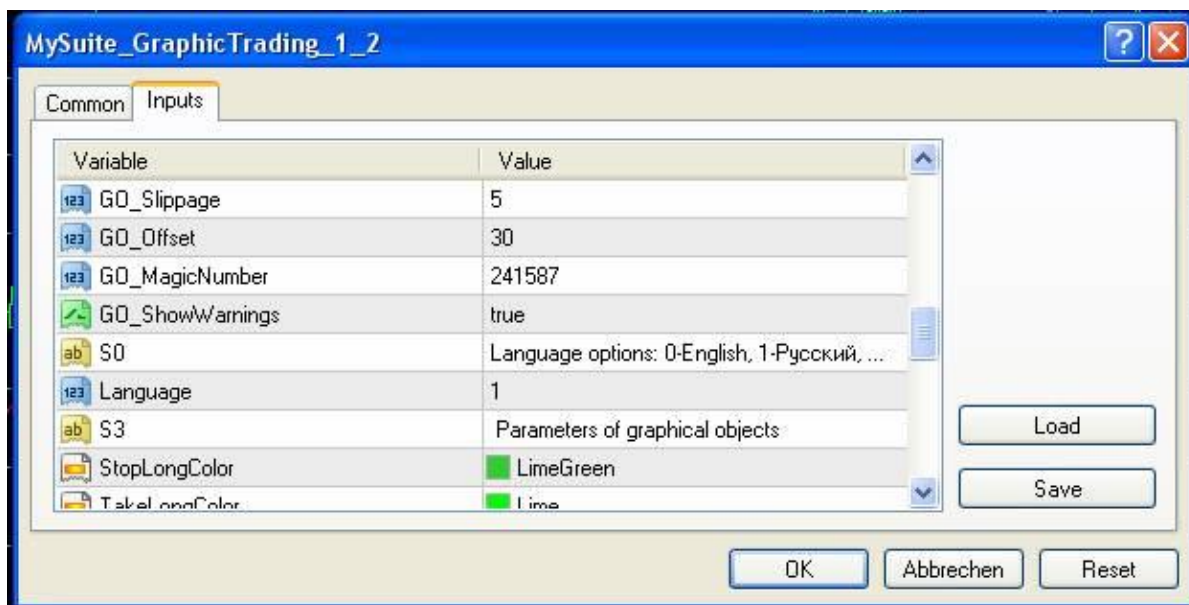
Distance from current market price for settings up pending orders.

GO_MagicNumber = 241587

Unequally number. Add for each position and pending orders which made by our advisor.

GO_ShowWarnings = true

If “false”- warnings messages will not be displayed for confirmation. Very important for scalpers and pips hunters.



Language options: 0-English, 1-Русский, 2-Deutsch "

Select an interface language

Language = 0

Parameters of graphical objects

StopLongColor = LimeGreen

Color of SL line

TakeLongColor = Lime

Color of TP line

OpenLongColor = SpringGreen

Color of OP (Open Position) line for long pending orders

StopShortColor = SkyBlue

Color of SL line for short positions and pending orders

TakeShortColor = Aquamarine

Color of TP line for short positions and pending orders

OpenShortColor = PaleTurquoise

Color of OP line for short pending orders

StopStyle = 2

Lines style for SL line

StopWidth = 2

Width for SL line

TakeStyle = 2

Lines style for TP line

TakeWidth = 2

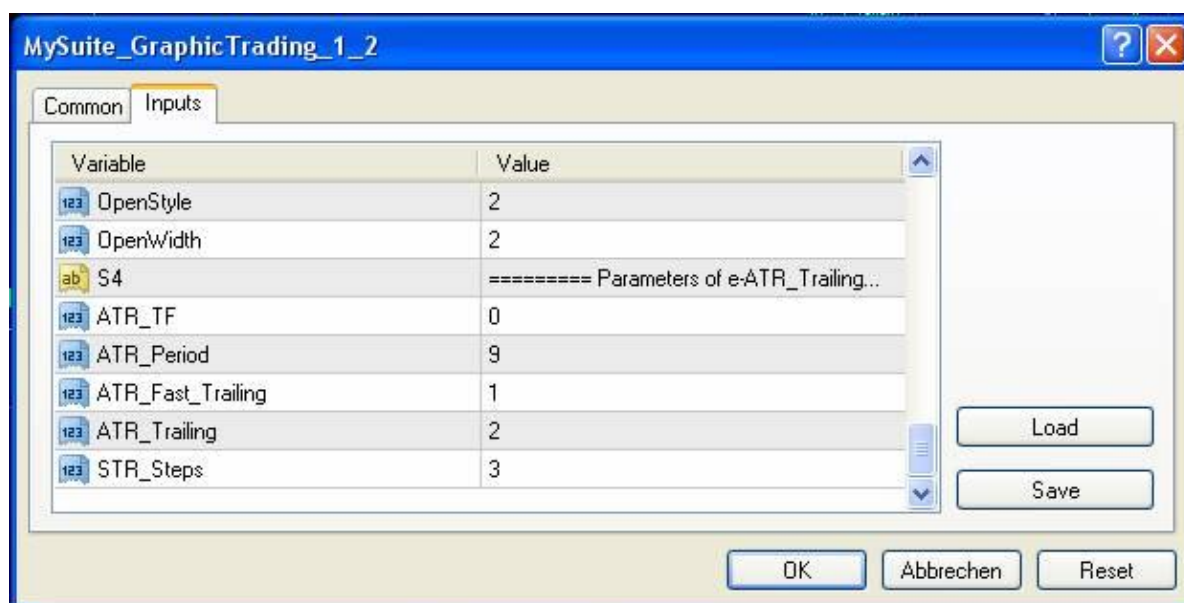
Width for TP line

OpenStyle = 2

Lines style for OP line

OpenWidth = 2

Width for OP line

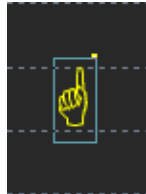
**DrawBackground = true**

under all graphic controls of GraphicTrading advisor will draw a background box.

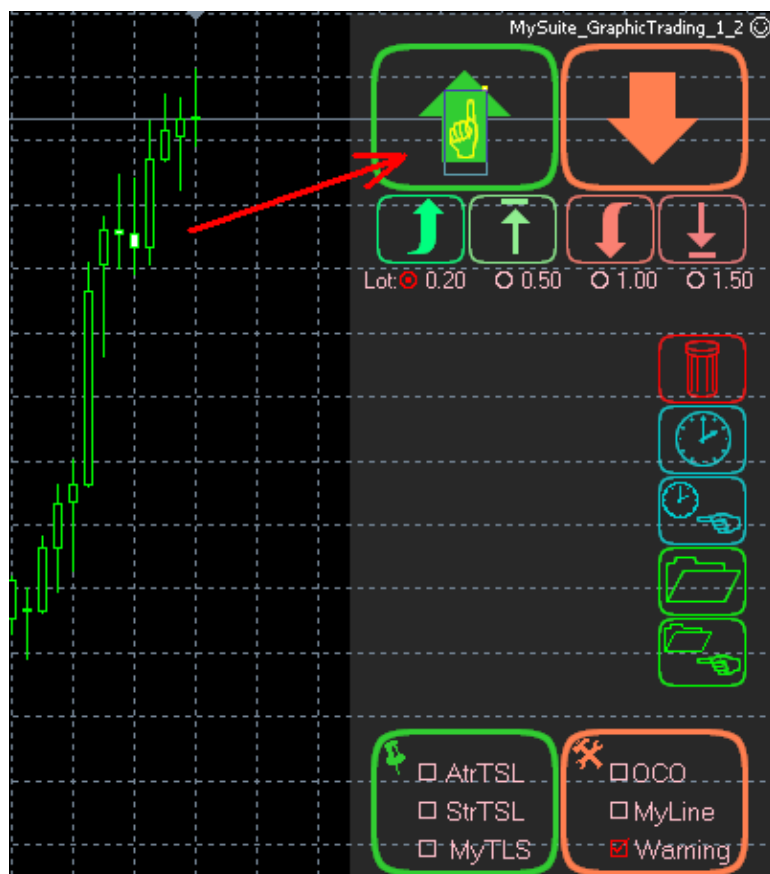
Working with GraphicTrading

For visual real-time working you need to select the “Cursor” object by double-click

1. Select “Cursor” using double click on this finger sign.



2. Drag and drop this “Cursor” object on any buttons on MySuite_GraphicTrading panel.



The “Cursor” gets back automatically on his place and desired operation will be executed.

The “Cursor” acts only within background box-field of GraphicTrading controls. If you dropped the Cursor outside this field – it will gets back on its place and nothing will happened.

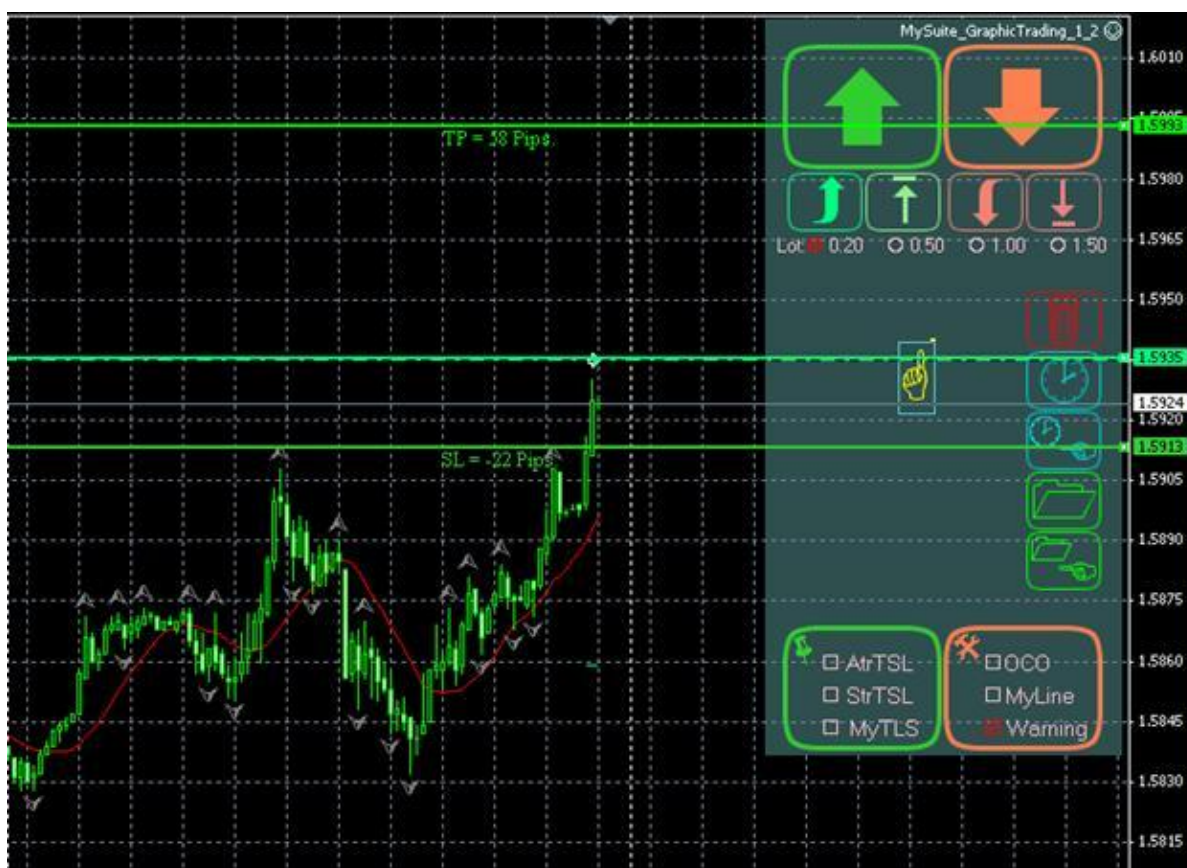
Management lines of SL (StopLoss)/TP (TakeProfit) and OP (Open Position) for pending orders.

With help GraphicTrading you can visually manage your TP, SL, OP lines changing real parameters of your real orders.

This principle has name WYSIWYG (**What You See Is What You Get**)

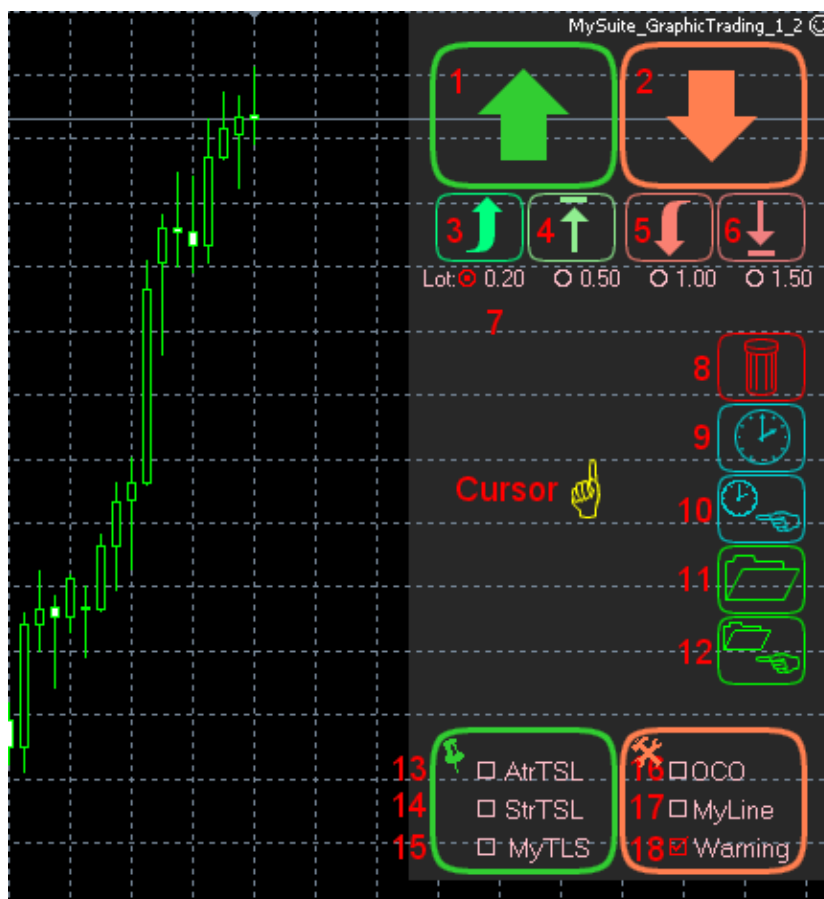
In contrast to manage functions direct on GraphicTrading's controls (buttons, checkboxes) – moving of driven lines goes direct by your mouse (without drag and dropping the "Cursor" object).

For lines management you need select it by double-click like in "Cursor" selecting case.



Moving of lines goes on vertical directions along price scale. Changing real SL/TP/OP of real orders and positions executed without delays (depends of internet connection speed)!

Description GUI (Graphic User Interface) of mySuite_GraphicTrading advisor



1. "Buy" button. Position opens by market price.
2. "Sell" button. Position opens by market price.
3. "BuyStop" – sending pending order. Buy by Stop
4. "BuyLimit" - sending pending order. Buy by Limit.
5. "SellStop" - sending pending order. Sell by Stop.
6. "Sell limit" - sending pending order. Sell by Limit.
7. Preset set of lots size.
8. Delete all pending orders close all opened positions on all symbols*.
9. Delete all pending orders on all symbols*.
10. Delete all pending orders on current symbol*.
11. Close all opened position by market prices*.
12. Close all opened position by market price on current symbol*.
13. Enable/disable trailing stop by ATR for opened positions on current symbol.
14. Enable/disable STR trailing stop by stair principle for opened positions on current symbol.
15. Enable/disable Common Take Profit function.
16. OCO (**O**ne **C**ancels **O**thers). This useful function cancels all pending orders on current symbol when one of these opened. Very useful for trapping tactics when trader installing 2 or more pending orders to caching desired trend.
17. "**MyLine**" by enabling this option our advisor will close your positions direct by your lines but not by brokers rules. For example: some brokers do not apply to install TP or SL too near market. In this case GraphicTrading advisor will spy for current market price

and will buy/sell by market prices which highlighted by your lines. This option very useful for scalpers and pips-hunters.

18. Enable/disable warning messages for actions of 8-12nd buttons.

* - When checkbox "Warnings" is checked – the warning message will appear for confirm operation

See below the additional buttons and features are available starting from version 2.0

Featured checkboxes description

TSL (Trailing Stop Loss) by ATR (ATR-trail):

This type of trailing stop is two level mechanism of stop moving. The first level using “Fast_ATR_Trailing” external parameter and working within lose zone. When you position goes into profits zone and SL jumps above 0-profit point, a second level work starting. This level manage all future SL moving and driven by “ATR_Trailing” external parameter.

External parameters for settings up of ATR-trailing:

- **ATR_TF=0** – Timeframe which uses for calculating ATR-trailing. 0 – current timeframe.
- **ATR_Period=9** – Period for middle average for calculating ATR-trailing.
- **Fast_ATR_Trailing=1.0** – first level of ATR-trailing working
- **ATR_Trailing=2.0** – second level of ATR-trailing working

The less parameters “Fast_ATR_Trailing” and “ATR_Trailing” the near to market SL moving. And otherwise: the more these parameters the far to market SL moving. Default parameters implement this tactic of SL moving:

Once little profit reached the SL moving near market price and applies to grow profit more. This trailing type is recommended for disruption tactics of trading.

STR TLS:

STR (stairs) usually using for trailing of long-time positions. This trail working by stair principle.

STR TLS managing by only one external parameter:

“STR_Step” (3 by default) – this is volume of stairs which will be used for division of whole way of trailing. For example for very long market moving of very long-time positions traders can use a value **STR_Step=8...12**. This way doing safer trailing in long way trailing. Of cause moving TP line recalculating your stair step in real-time mode.

Principle of working:

By opening position and switched STR TLS on, the length of trailing calculating. This length = quantity of pips from price of open position (**OP**) till TP price.

Step of trailing (**ST**) calculating by next simple rule: length of trailing division by STR_Step (quantity of step)

SL tailings on price = open position’s price + ST. Once market price above OP + ST + ST, the SL will be moved on the OP + ST. Also this rightly for short positions.

Working within lose zone:

While position is in lose zone and in little profit the SL will stay on his place. The first SL trailing will be made when market price reached a price = OP + (length in pips between OP and SL). After this the SL trailing on OP price and waiting next trail till market price will OP + ST+ST. By other words – trailing goes by steps.

Take a note: when GraphicTrading advisor working you can change real-time only ST (Step of Trailing) size but not STR_Step (quantity of step).

look-and-feel:

Using GraphicTrading you can use once only one type of trailing. Switching on one trailing checkbox, means switching off another one. You can switch off trailing at all by unchecking of all checkboxes of each type of trailing.

COM. TP

Com. TP (Common Take Profit) checkbox using for simultaneous visual modifying TP of several opened positions (not pending). Just select this check box and move on of several TP - all other on this symbol will modify according with this one. This feature is very hospital for modifying multiple positions opened by some trading strategy using loses coverage principle (for example: any strategies using Martingale principle for Money Management).

OCO

This checkbox emulate behavior of some other trading platforms order type. OCO - **O**ne **C**ancel **O**ther. This order type is missing in MetaTrader4 platform but very comfortable for traders who seek a market's enter using by pending orders. If user installed several pending orders on one of symbol, first executed will send a command to cancel all other pending orders on this symbol.

TrndLine

This checkbox starts very useful feature for trading by drawn line. Traders who use breakdown of supporting or resistance lines strategies, able simply draw a line (green - resistance, red - supporting) and make a pending order. As result, in real time going, the pending order will fly exactly by this line and TP and SL will moving synchronously.

Warning

This checkbox enable/disable warnings messages which appear by action called by buttons 8-12

Starting from version 2.0 was made some improvements and new features



There are some new checkboxes and buttons:

Starting from version 2.0 was made some improvements and new features

There are some new checkboxes and buttons:

19 - **SL**. If checked all new positions and orders will opened with linked Stop loss.

20 - **TP**. If checked all new position and orders will opened with linked Take Profit.

21 - **Trailing SL&TP**. If checked, moving open-price line for all pending orders will move TP and SL synchronously with OP line (**O**pen **P**osition).

22 - **Close all profitable this symbol**. By "click", all opened profitable positions on this symbol will be closed.

23 - **Close all unprofitable this symbol**. By "click", all opened unprofitable positions on this symbol will be closed.

24 - **Close all profitable**. By "click", all profitable positions will be closed.

25 - **Close all unprofitable**. By "click", all unprofitable positions will be closed.

Also all buttons real-time highlighted according situation on your account. For example: by profitable positions on one symbol, the GraphicTrader's button "Close all unprofitable this symbol" on other symbol will be grayed.

Since version 2.1 entered a new external parameter: GUIfactor = 1 (by default) this parameter must have feature for them who using modern monitors and HD screen resolution. Windows 7 applying to increase all GUI (**G**raphic **U**ser **I**nterface) objects on 125% (by default). In this case you have to set this parameter to 0.8 to keeping right aspect of graphic objects of Graphic Trading EA.